

TracPipe Submittal Drawings

Doc No.	Description	Applicable P/N(s)
FGP-SUB-002	Counterstrike Gas Piping, 3/8" through 2"	FGP-CS-XXX
FGP-SUB-003	TracPipe PS-II Gas Piping, 3/8" through 2"	FGP-UGP-XXX
FGP-SUB-004	AutoFlare Straight Fitting Assy	FGP-FST-XXX
FGP-SUB-005	AutoFlare Female Straight Fitting Assy	FGP-FSTF-XXX
FGP-SUB-006	AutoFlare Coupling Assy	FGP-CPLG-XXX
FGP-SUB-007	Flange Fitting Assy	FGP-BFF-XXX
FGP-SUB-008	Flange L Bracket	FGP-TERM-BRAC
FGP-SUB-009	90 Flange Fitting Assy	FGP-ELLB-XXX
FGP-SUB-010	90 Flange Valve Assy	FGP-BF90V-XXX
FGP-SUB-011	Termination Mount Assy	FGP-TM-XXX
FGP-SUB-012	90 Termination Mount Assy	FGP-90TM-XXX
FGP-SUB-013	90 Termination Valve Assy	FGP-TM90V-XXX
FGP-SUB-014	AutoFlare x Pipe NPT Tee	FGP-TXXX-XXX
FGP-SUB-015	AutoFlare Tee Assy	FGP-TFXXX-TXXX / FGP-RT-XXX
FGP-SUB-016	Key Valve Bracket Assy	FGP-KVB-XXX
FGP-SUB-017	Meter Termination Stub-out M-NPT	FGP-XXX MT
FGP-SUB-018	Meter Stud Bracket	FGP-STUD-BRAC
FGP-SUB-019	Appliance Stub-out M-NPT	FGP-ASP-500
FGP-SUB-020	Fireplace Stub-out M-NPT	FGP-FPT-500
FGP-SUB-021	Meter Termination TracPipe	FGP-MTX-XXX
FGP-SUB-022	Meter Termination Bracket	FGP-MT-BRAC
FGP-SUB-023	Metal Wall Box w/ Valve Assy	FGP-WBTM-XXX
FGP-SUB-024	Manifolds FGP-MI-SIZE	FGP-MI-PC, PC-1X, PC-2X
FGP-SUB-025	Manifold Bracket	FGP-MB2
FGP-SUB-026	Stackable Manifold	FGP-MI-ST-XXX
FGP-SUB-027	Stackable Manifold Bracket	FGP-MB-ST
FGP-SUB-028	Load Center w/ Manifold Bracket	FGP-LC
FGP-SUB-029	Bonding Clamps	FGP-GC-X
FGP-SUB-030	PS-II Adapter Assy	FGP-UGF-XXX
FGP-SUB-031	PS-II Coupling Assy	FGP-UGC-XXX
FGP-SUB-032	Striker Plates	FGP-SP-XXX
FGP-SUB-033	Ball Valve 5 psi	FGP-WBV-XXX
FGP-SUB-034	Quick Disconnect	FGP-QDS
FGP-SUB-035	Excess Flow Valve	FGP-AFD-XXX / FGP-LFD-XXX
FGP-SUB-036	Submittal Index - US	

Product

CounterStrike Flexible Gas Piping, 3/8" through 2"

Project Information

Job Name:	Date Submitted:
Location:	Submitted By:
Engineer:	Approved By:
Contractor:	Manufacturer's Rep:

Installation

Must be installed in accordance with the TracPipe Design Guide and Installation Instructions and all applicable codes

Application Information

Conductive Jacketed Flexible Gas Piping for use in Natural Gas and Liquefied Petroleum (Propane) Gas applications. Used with TracPipe AutoFlare fittings and accessories.

Technical Data

Materials

Tubing	ASTM A240 300 Series Stainless Steel
Jacket	UV/Ozone Resistant Polyethylene with flame retardant

Pressure Ratings

Specification Operating Pressure	25 PSIG
CSA International Evaluation Report - Max Operating Pressure, 3/8" through 1-1/4"	125 PSIG

Temperature Ratings

Operating Temperature Range	-20 to 200 Deg F
Tubing Melting Point	2400 Deg F
Jacket Melting Point	350 Deg F



Codes

ICC Codes (IFGC, IRC, IMC, IPC), NFPA 54, UPC, CAN/CSA B149.1, NFPA 58

Standards

ANSI LC1 / CSA 6.26, UL 723 (ASTM E84), ICC LC 1024, ANSI Z223.1

Listings

CSA, ICC PMG 1058, UL (Through Penetration Firestop Systems), FM (Factory Mutual), IAPMO ES ER-0227

Dimensional Information

✓	Size	*P/N	EHD	OD w/ Jacket (Nom. in.)	OD w/o Jacket (Nom. in.)	ID (Nom. In.)	Tubing Wall Thickness (in.)	Weight (lbs/ft)
<input type="checkbox"/>	3/8"	FGP-CS-375-XXX	15	0.700	0.600	0.440	0.010	0.15
<input type="checkbox"/>	1/2"	FGP-CS-500-XXX	19	0.888	0.788	0.597	0.010	0.21
<input type="checkbox"/>	3/4"	FGP-CS-750-XXX	25	1.140	1.040	0.820	0.010	0.28
<input type="checkbox"/>	1"	FGP-CS-1000-XXX	31	1.415	1.315	1.060	0.010	0.39
<input type="checkbox"/>	1-1/4"	FGP-CS-1250-XXX	37	1.700	1.600	1.290	0.012	0.52
<input type="checkbox"/>	1-1/2"	FGP-CS-1500-XXX	46	1.940	1.840	1.525	0.012	0.73
<input type="checkbox"/>	2"	FGP-CS-2000-XXX	62	2.515	2.415	2.060	0.012	0.91

*XXX - Denotes Reel size (length of pipe) in feet

Omega Flex, Inc. * 451 Creamery Way* Exton, PA 19341
Tel: 610-524-7272 * Toll Free: 800-671-8622 * Fax: 610-524-7282
www.omegaflex.com

Product

TracPipe PS-II Flexible Gas Piping, 3/8" through 2"

Project Information

Job Name:	Date Submitted:
Location:	Submitted By:
Engineer:	Approved By:
Contractor:	Manufacturer's Rep:

Installation

Must be installed in accordance with the TracPipe Design Guide and Installation Instructions and all applicable codes

Application Information

Black Jacketed "Pre-Sleeved" Flexible Gas Piping approved for direct burial in Underground Natural Gas and Liquefied Petroleum (Propane) Gas applications. Used with TracPipe PS-II Male Adapter fittings or Couplings.



Technical Data

Materials

Tubing	ASTM A240 300 Series Stainless Steel
Jacket	UV/Ozone Resistant Polyethylene

Pressure Ratings

Specification Operating Pressure	25 PSIG
CSA International Evaluation Report - Max Operating Pressure, 3/8" through 1-1/4"	125 PSIG

Temperature Ratings

Operating Temperature Range	-20 to 200 Deg F
Tubing Melting Point	2400 Deg F
Jacket Melting Point	350 Deg F

Codes

ICC Codes (IFGC, IRC, IMC, IPC), NFPA 54, UPC, CAN/CSA B149.1, NFPA 58

Standards

ANSI LC1 / CSA 6.26, ANSI Z223.1

Listings

CSA, ICC PMG 1052, IAPMO (UPC) File No. 4665, FM (Factory Mutual)

Dimensional Information

✓	Size	*P/N	EHD	OD w/ Jacket (Nom. in.)	OD w/o Jacket (Nom. in.)	ID (Nom. In.)	Tubing Wall Thickness (in.)	Weight (lbs/ft)
<input type="checkbox"/>	3/8"	FGP-UGP-375-XXX	15	0.820	0.600	0.440	0.010	0.23
<input type="checkbox"/>	1/2"	FGP-UGP-500-XXX	19	1.080	0.788	0.597	0.010	0.33
<input type="checkbox"/>	3/4"	FGP-UGP-750-XXX	25	1.320	1.040	0.820	0.010	0.43
<input type="checkbox"/>	1"	FGP-UGP-100-XXX	31	1.600	1.315	1.060	0.010	0.57
<input type="checkbox"/>	1-1/4"	FGP-UGP-125-XXX	37	1.960	1.600	1.290	0.012	0.91
<input type="checkbox"/>	1-1/2"	FGP-UGP-150-XXX	46	2.180	1.840	1.525	0.012	1.00
<input type="checkbox"/>	2"	FGP-UGP-200-XXX	62	2.800	2.415	2.060	0.012	1.47

*XXX - Denotes Reel size (length of pipe) in feet

Omega Flex, Inc. * 451 Creamery Way* Exton, PA 19341

Tel: 610-524-7272 * Toll Free: 800-671-8622 * Fax: 610-524-7282

www.omegaflex.com

Product

AutoFlare Straight Fitting (Male-NPT) Assembly for TracPipe and CounterStrike

Project Information

Job Name:	Date Submitted:
Location:	Submitted By:
Engineer:	Approved By:
Contractor:	Manufacturer's Rep:

Installation

Must be installed in accordance with the TracPipe Design Guide and Installation Instructions and all applicable codes

Application Information

Transition fitting between TracPipe or CounterStrike Tubing and NPT thread. Fitting thread is Male NPT. For use indoor, outdoor, and concealed location applications.

Technical Data

Materials

Nut, Adapter, and Split Rings	Yellow Brass
Insert and 1" Split Rings	Stainless Steel

Pressure Ratings (used with tubing)

Specification Operating Pressure	25 PSIG
CSA International Evaluation Report - Max Operating Pressure, 3/8" through 1-1/4"	125 PSIG

Temperature Ratings (used with tubing)

Operating Temperature Range	-20 to 200 Deg F
-----------------------------	------------------



Codes

ICC Codes (IFGC, IRC, IMC, IPC), NFPA 54, UPC, CAN/CSA B149.1, NFPA 58

Standards

ANSI LC1 / CSA 6.26. ANSI Z223.1

Listings

CSA, ICC PMG 1046 / 1058, IAPMO (UPC) File No. 3682 / ES ER-0227, FM (Factory Mutual)

Dimensional Information

✓	Size	P/N	Diameter across flats (Nom. in.)	Fitting length (Nom. in.)	TracPipe or CounterStrike Size	Male NPT Pipe size	Weight (lbs)
<input type="checkbox"/>	3/8"	FGP-FST-375N	1"	2"	3/8"	3/8"	0.3
<input type="checkbox"/>	3/8"x1/2"	FGP-FST-375	1"	2"	3/8"	1/2"	0.4
<input type="checkbox"/>	1/2"	FGP-FST-500	1-1/8"	2"	1/2"	1/2"	0.4
<input type="checkbox"/>	1/2"x3/4"	FGP-RST500-750	1-1/8"	2"	1/2"	3/4"	0.4
<input type="checkbox"/>	3/4"	FGP-FST-750	1-3/8"	2-1/8"	3/4"	3/4"	0.5
<input type="checkbox"/>	3/4"x1/2"	FGP-RST750-500	1-3/8"	2"	3/4"	1/2"	0.5
<input type="checkbox"/>	1"	FGP-FST-1000	1-5/8"	2-3/8"	1"	1"	0.7
<input type="checkbox"/>	1"x3/4"	FGP-RST1000-750	1-5/8"	2-1/8"	1"	3/4"	0.7
<input type="checkbox"/>	1-1/4"	FGP-FST-1250	2-1/8"	2-5/8"	1-1/4"	1-1/4"	1.5
<input type="checkbox"/>	1-1/2"	FGP-FST-1500	2-1/2"	3"	1-1/2"	1-1/2"	2.1
<input type="checkbox"/>	2"	FGP-FST-2000	3-1/4"	3-1/16"	2"	2"	3.5

Omega Flex, Inc. * 451 Creamery Way* Exton, PA 19341

Tel: 610-524-7272 * Toll Free: 800-671-8622 * Fax: 610-524-7282

www.omegaflex.com

Product

AutoFlare Straight Fitting (Female-NPT) Assembly for TracPipe and CounterStrike

Project Information

Job Name:	Date Submitted:
Location:	Submitted By:
Engineer:	Approved By:
Contractor:	Manufacturer's Rep:

Installation

Must be installed in accordance with the TracPipe Design Guide and Installation Instructions and all applicable codes

Application Information

Transition fitting between TracPipe or CounterStrike Tubing and NPT thread. Fitting thread is Female NPT. For use indoor, outdoor, and concealed location applications.

Technical Data

Materials

Nut, Adapter, and Split Rings	Yellow Brass
Insert and 1" Split Rings	Stainless Steel

Pressure Ratings (used with tubing)

Specification Operating Pressure	25 PSIG
CSA International Evaluation Report - Max Operating Pressure, 3/8" through 1-1/4"	125 PSIG

Temperature Ratings (used with tubing)

Operating Temperature Range	-20 to 200 Deg F
-----------------------------	------------------



Codes

ICC Codes (IFGC, IRC, IMC, IPC), NFPA 54, UPC, CAN/CSA B149.1, NFPA 58

Standards

ANSI LC1 / CSA 6.26 ANSI Z223.1

Listings

CSA, ICC PMG 1046 / 1058, IAPMO (UPC) File No. 3682 / ES ER-0227, FM (Factory Mutual)

Dimensional Information

✓	Size	P/N	Diameter	Fitting	TracPipe or		Weight (lbs)
			across flats (Nom. in.)	length (Nom. in.)	CounterStrike Size	Female NPT Pipe size	
<input type="checkbox"/>	3/8"x1/2"	FGP-FSTF-375	1"	1-7/16"	3/8"	1/2"	0.2
<input type="checkbox"/>	1/2"	FGP-FSTF-500	1-1/8"	1-1/2"	1/2"	1/2"	0.3
<input type="checkbox"/>	3/4"	FGP-FSTF-750	1-3/8"	1-3/4"	3/4"	3/4"	0.5
<input type="checkbox"/>	1"	FGP-FSTF-1000	1-5/8"	1-3/4"	1"	1"	0.6

Product

AutoFlare Coupling Assembly for TracPipe and CounterStrike

Project Information

Job Name:	Date Submitted:
Location:	Submitted By:
Engineer:	Approved By:
Contractor:	Manufacturer's Rep:

Installation

Must be installed in accordance with the TracPipe Design Guide and Installation Instructions and all applicable codes

Application Information

Coupling fitting for use between like sizes of TracPipe or CounterStrike Tubing. For indoor, outdoor, and concealed location applications.



Technical Data

Materials

Nut, Adapter, and Split Rings	Yellow Brass
Insert and 1" Split Rings	Stainless Steel

Pressure Ratings (used with tubing)

Specification Operating Pressure	25 PSIG
CSA International Evaluation Report - Max Operating Pressure, 3/8" through 1-1/4"	125 PSIG

Temperature Ratings (used with tubing)

Operating Temperature Range	-20 to 200 Deg F
-----------------------------	------------------

Codes

ICC Codes (IFGC, IRC, IMC, IPC), NFPA 54, UPC, CAN/CSA B149.1, NFPA 58

Standards

ANSI LC1 / CSA 6.26, ANSI Z223.1

Listings

CSA, ICC PMG 1046 / 1058, IAPMO (UPC) File No. 3682 / ES ER-0227, FM (Factory Mutual)


Dimensional Information

✓	Size	P/N	Diameter across flats (Nom. in.)	Fitting length (Nom. in.)	TracPipe or CounterStrike Size	Weight (lbs)
<input type="checkbox"/>	3/8"	FGP-CPLG-375	1"	2"	3/8" X 3/8"	0.3
<input type="checkbox"/>	1/2"	FGP-CPLG-500	1-1/8"	2-1/16"	1/2" X 1/2"	0.5
<input type="checkbox"/>	3/4"	FGP-CPLG-750	1-3/8"	2-1/4"	3/4" X 3/4"	0.7
<input type="checkbox"/>	1"	FGP-CPLG-1000	1-5/8"	2-11/32"	1" X 1"	0.9
<input type="checkbox"/>	1-1/4"	FGP-CPLG-1250	2-1/8"	2-7/8"	1-1/4" X 1-1/4"	2.0
<input type="checkbox"/>	1-1/2"	FGP-CPLG-1500	2-1/2"	3-3/8"	1-1/2" X 1-1/2"	3.3
<input type="checkbox"/>	2"	FGP-CPLG-2000	3-1/4"	3-5/8"	2" X 2"	5.5

Omega Flex, Inc. * 451 Creamery Way* Exton, PA 19341

Tel: 610-524-7272 * Toll Free: 800-671-8622 * Fax: 610-524-7282

www.omegaflex.com

Product							
Flange Fitting (Male- NPT) Assembly for TracPipe and CounterStrike							
Project Information							
Job Name:				Date Submitted:			
Location:				Submitted By:			
Engineer:				Approved By:			
Contractor:				Manufacturer's Rep:			
Installation							
Must be installed in accordance with the TracPipe Design Guide and Installation Instructions and all applicable codes							
Application Information							
Termination fitting between TracPipe or CounterStrike Tubing and NPT thread. Fitting thread is Male NPT. For use indoor, outdoor, and concealed location applications.							
Technical Data							
Materials							
Nut, Adapter, Flange and Split Rings		Yellow Brass					
Insert and 1" Split Rings		Stainless Steel					
Pressure Ratings (used with tubing)							
Specification Operating Pressure		25 PSIG					
CSA International Evaluation Report - Max Operating Pressure, 3/8" through 1-1/4"		125 PSIG					
Temperature Ratings (used with tubing)							
Operating Temperature Range		-20 to 200 Deg F					
Codes							
ICC Codes (IFGC, IRC, IMC, IPC), NFPA 54, UPC, CAN/CSA B149.1, NFPA 58							
Standards							
ANSI LC1 / CSA 6.26, ANSI 223.1							
Listings							
CSA, ICC PMG 1046 / 1058, IAPMO (UPC) File No. 3682 / ES ER-0227, FM (Factory Mutual)							
Dimensional Information							
✓			<i>Diameter across flats (Nom. in.)</i>	<i>Fitting length (Nom. in.)</i>	<i>TracPipe or CounterStrike Size</i>	<i>Flange Diameter</i>	<i>Weight (lbs)</i>
<input type="checkbox"/>	Size 3/8"	P/N FGP-BFF-375	1"	2-5/8"	3/8"	3-1/4"	0.7
<input type="checkbox"/>	1/2"	FGP-BFF-500	1-1/8"	2-5/8"	1/2"	3-1/4"	0.7
<input type="checkbox"/>	3/4"	FGP-BFF-750	1-3/8"	2-11/16"	3/4"	3-7/16"	1.3
<input type="checkbox"/>	1"	FGP-BFF-1000	1-5/8"	3"	1"	3-7/16"	1.5
<input type="checkbox"/>	1-1/4"	FGP-BFF-1250	2-1/8"	3-1/2"	1-1/4"	4"	2.6

Omega Flex, Inc. * 451 Creamery Way* Exton, PA 19341

Tel: 610-524-7272 * Toll Free: 800-671-8622 * Fax: 610-524-7282

www.omegaflex.com

Product

Mounting Bracket for Flange Fitting Assembly (optional)

Project Information

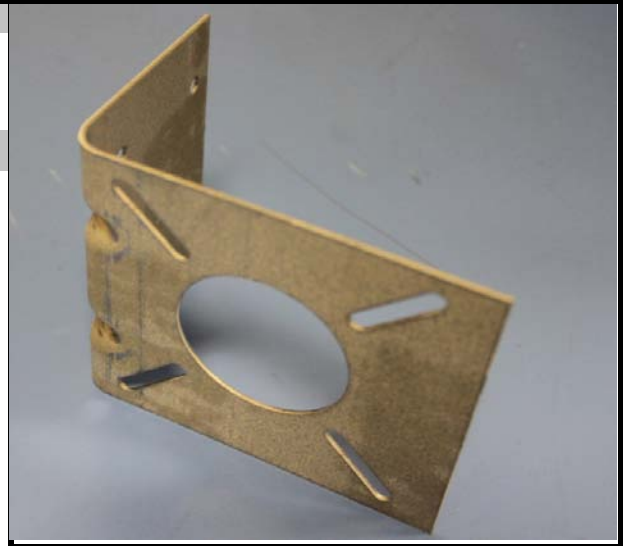
Job Name:	Date Submitted:
Location:	Submitted By:
Engineer:	Approved By:
Contractor:	Manufacturer's Rep:

Installation

Must be installed in accordance with the TracPipe Design Guide and Installation Instructions and all applicable codes

Application Information

May be used for rigid mounting of a TracPipe or CounterStrike Flange Fitting. For indoor, outdoor and concealed location applications.



Technical Data

Materials

Galvanized Steel

Pressure Ratings (used with tubing)

N/A

Temperature Ratings (used with tubing)

Operating Temperature Range -20 to 200 Deg F

Codes

Standards

Listings

Dimensional Information

✓	Size	P/N	L x W x D	TracPipe or CounterStrike Size	Weight (lbs)
<input type="checkbox"/>	ALL	FGP-TERM BRAC	5" x 5" x 2-3/4"	3/8" thru 1-1/4"	0.3

Product

90° Flange Fitting (Male - NPT) Assembly for TracPipe or CounterStrike

Project Information

Job Name:	Date Submitted:
Location:	Submitted By:
Engineer:	Approved By:
Contractor:	Manufacturer's Rep:

Installation

Must be installed in accordance with the TracPipe Design Guide and Installation Instructions and all applicable codes

Application Information

Termination fitting for rigid mounting of TracPipe or CounterStrike Tubing and provide a NPT thread. Fitting thread is Male NPT. For use indoor, outdoor, and concealed location applications.

Technical Data

Materials

Nut, Adapter, Flange and Split Rings	Yellow Brass
Insert	Stainless Steel

Pressure Ratings (used with tubing)

Specification Operating Pressure	25 PSIG
CSA International Evaluation Report - Max Operating Pressure, 3/8" and 1/2"	125 PSIG

Temperature Ratings (used with tubing)

Operating Temperature Range	-20 to 200 Deg F
-----------------------------	------------------



Codes

ICC Codes (IFGC, IRC, IMC, IPC), NFPA 54, UPC, CAN/CSA B149.1, NFPA 58

Standards

ANSI LC1 / CSA 6.26 ANSI Z223.1

Listings

CSA, ICC PMG 1046 / 1058, IAPMO (UPC) File No. 3682 / ES ER-0227, FM (Factory Mutual)

Dimensional Information

✓	Size	P/N	Diameter		TracPipe or CounterStrike		Flange Diameter	Weight (lbs)
			across flats (Nom. in.)	Length (Nom. in.)	Size	Size		
<input type="checkbox"/>	3/8"	FGP-ELLB-375	1"	2-11/16"	3/8"	3-1/4"	1.1	
<input type="checkbox"/>	1/2"	FGP-ELLB-500	1-1/8"	2-11/16"	1/2"	3-1/4"	1.0	

Omega Flex, Inc. * 451 Creamery Way* Exton, PA 19341

Tel: 610-524-7272 * Toll Free: 800-671-8622 * Fax: 610-524-7282

www.omegaflex.com

Product

90° Flange Fitting (Valve - Female NPT) Assembly for TracPipe or CounterStrike

Project Information

Job Name:	Date Submitted:
Location:	Submitted By:
Engineer:	Approved By:
Contractor:	Manufacturer's Rep:

Installation

Must be installed in accordance with the TracPipe Design Guide and Installation Instructions and all applicable codes

Application Information

Termination fitting between TracPipe or CounterStrike tubing and Appliance Shut off Valve with NPT thread. Fitting thread is Female NPT. For indoor use only.

Technical Data

Materials

Nut, Adapter, Flange and Split Rings	Yellow Brass
Insert	Stainless Steel
Valve Body	Plated Brass

Pressure Ratings (used with tubing)

Specification Operating Pressure	1/2 PSIG
Max Test Pressure	60 PSIG

Temperature Ratings (used with tubing)

Operating Temperature Range	32 to 125 Deg F
-----------------------------	-----------------



Codes

ICC Codes (IFGC, IRC, IMC, IPC), NFPA 54, UPC, CAN/CSA B149.1, NFPA 58

Standards

ANSI LC1 / CSA 6.26, ANSI Z21.15, ANSI Z223.1

Listings

CSA, ICC PMG 1046 / 1058, IAPMO (UPC) File No. 3682 / ES ER-0227, FM (Factory Mutual)

Dimensional Information

✓	Size	P/N	Diameter across flats (Nom. in.)	Fitting length (Nom. in.)	TracPipe or CounterStrike Size	Flange Diameter	Weight (lbs)
<input type="checkbox"/>	3/8"	FGP-BF90V-375	1"	3-5/8"	3/8"	3-1/4"	1.2
<input type="checkbox"/>	1/2"	FGP-BF90V-500	1-1/8"	3-7/8"	1/2"	3-1/4"	1.20
<input type="checkbox"/>	3/4"	FGP-BF90V-750	1-3/8"	4-3/4"	3/4"	3-7/16"	1.7

Omega Flex, Inc. * 451 Creamery Way* Exton, PA 19341

Tel: 610-524-7272 * Toll Free: 800-671-8622 * Fax: 610-524-7282

www.omegaflex.com

Product						
Termination Mount (Male - NPT) Assembly for TracPipe and CounterStrike						
Project Information						
Job Name:			Date Submitted:			
Location:			Submitted By:			
Engineer:			Approved By:			
Contractor:			Manufacturer's Rep:			
Installation						
Must be installed in accordance with the TracPipe Design Guide and Installation Instructions and all applicable codes						
Application Information						
Termination fitting between TracPipe or CounterStrike Tubing and NPT thread. Fitting thread is Male NPT. For use indoor, outdoor, and concealed location applications.						
Technical Data						
<u>Materials</u>						
Nut, Adapter, and Split Rings		Yellow Brass				
Insert		Stainless Steel				
Mounting Bracket		Galvanized Steel				
<u>Pressure Ratings (used with tubing)</u>						
Specification Operating Pressure		25 PSIG				
CSA International Evaluation Report - Max Operating Pressure, 3/8" through 1"		125 PSIG				
<u>Temperature Ratings (used with tubing)</u>						
Operating Temperature Range		-20 to 200 Deg F				
Codes						
ICC Codes (IFGC, IRC, IMC, IPC), NFPA 54, UPC, CAN/CSA B149.1, NFPA 58						
Standards						
ANSI LC1 / CSA 6.26, ANSI Z21.15, ANSI Z223.1						
Listings						
CSA, ICC PMG 1046 / 1058, IAPMO (UPC) File No. 3682 / ES ER-0227, FM (Factory Mutual)						
Dimensional Information						
✓			<i>Diameter across flats (Nom. in.)</i>	<i>L X W X H</i>	<i>TracPipe or CounterStrike Size</i>	<i>Weight (lbs)</i>
<input type="checkbox"/>	Size	P/N				
<input type="checkbox"/>	3/8"	FGP-TM-375	1"	6-3/8" X 4" X 2-3/8"	3/8"	0.9
<input type="checkbox"/>	1/2"	FGP-TM-500	1-1/8"	6-3/8" X 4" X 2-7/16"	1/2"	1
<input type="checkbox"/>	3/4"	FGP-TM-750	1-3/8"	6-3/8" X 4" X 2-1/2"	3/4"	1.1
<input type="checkbox"/>	3/4" x 1/2"	FGP-TM-750-500	1-3/8"	6-3/8" X 4" X 2-1/2"	3/4"	1.1
<input type="checkbox"/>	1"	FGP-TM-1000	1-5/8"	6-3/8" X 4" X 2-3/4"	1"	1.3



Omega Flex, Inc. * 451 Creamery Way* Exton, PA 19341

Tel: 610-524-7272 * Toll Free: 800-671-8622 * Fax: 610-524-7282

www.omegaflex.com

Product

90° Termination Mount (Male - NPT) Assembly for TracPipe and CounterStrike

Project Information

Job Name:	Date Submitted:
Location:	Submitted By:
Engineer:	Approved By:
Contractor:	Manufacturer's Rep:

Installation

Must be installed in accordance with the TracPipe Design Guide and Installation Instructions and all applicable codes

Application Information

Termination fitting between TracPipe or CounterStrike Tubing and NPT thread. Fitting thread is Male NPT. For use indoor, outdoor, and concealed location applications.

Technical Data

Materials

Nut, Adapter, and Split Rings	Yellow Brass
Insert	Stainless Steel
Mounting Bracket	Galvanized Steel

Pressure Ratings (used with tubing)

Specification Operating Pressure	25 PSIG
CSA International Evaluation Report - Max Operating Pressure, 3/8" and 1/2"	125 PSIG

Temperature Ratings (used with tubing)

Operating Temperature Range	-20 to 200 Deg F
-----------------------------	------------------



Codes

ICC Codes (IFGC, IRC, IMC, IPC), NFPA 54, UPC, CAN/CSA B149.1, NFPA 58

Standards

ANSI LC1 / CSA 6.26, ANSI Z223.1

Listings

CSA, ICC PMG 1046 / 1058, IAPMO (UPC) File No. 3682 / ES ER-0227, FM (Factory Mutual)

Dimensional Information

✓			Diameter	L X W X H	TracPipe or	Weight (lbs)
	Size	P/N	across flats		CounterStrike	
			(Nom. in.)		Size	
<input type="checkbox"/>	3/8"	FGP-90TM-375	1"	6-3/8" x 4" x 2-1/2"	3/8"	1.2
<input type="checkbox"/>	1/2"	FGP-90TM-500	1-1/8"	6-3/8" x 4" x 2-9/16"	1/2"	1.2

Product						
90° Termination Mount (Valve - Female NPT) Assembly for TracPipe or CounterStrike						
Project Information						
Job Name:			Date Submitted:			
Location:			Submitted By:			
Engineer:			Approved By:			
Contractor:			Manufacturer's Rep:			
Installation						
Must be installed in accordance with the TracPipe Design Guide and Installation Instructions and all applicable codes						
Application Information						
Termination fitting between TracPipe or CounterStrike Tubing with appliance shut-off valve and NPT thread. Fitting thread is Female NPT. For indoor use only.						
Technical Data						
<u>Materials</u>						
Nut, Adapter, and Split Rings		Yellow Brass				
Insert		Stainless Steel				
Mounting Bracket		Galvanized Steel				
Valve Body		Plated Brass				
<u>Pressure Ratings (used with tubing)</u>						
Specification Operating Pressure		1/2 PSIG				
Max Test Pressure		60 PSIG				
<u>Temperature Ratings (used with tubing)</u>						
Operating Temperature Range		32 to 125 Deg F				
Codes						
ICC Codes (IFGC, IRC, IMC, IPC), NFPA 54, UPC, CAN/CSA B149.1, NFPA 58						
Standards						
ANSI LC1 / CSA 6.26, ANSI Z21.15, ANSI Z223.1						
Listings						
CSA, ICC PMG 1046 / 1058, IAPMO (UPC) File No. 3682 /ES ER-0227 FM (Factory Mutual)						
Dimensional Information						
✓			<i>Diameter across flats (Nom. in.)</i>	<i>L X W X H</i>	<i>TracPipe or CounterStrike Size</i>	<i>Weight (lbs)</i>
<input type="checkbox"/>	Size	P/N				
<input type="checkbox"/>	3/8"	FGP-TM90V-375	1"	6-3/8" x 4" x 3-1/2"	3/8"	1.3
<input type="checkbox"/>	1/2"	FGP-TM90V-500	1-1/8"	6-3/8" x 4" x 3-3/4"	1/2"	1.3
<input type="checkbox"/>	3/4"	FGP-TM90V-750	1-3/8"	6-3/8" x 4" x 4-9/16"	3/4"	1.7



Omega Flex, Inc. * 451 Creamery Way* Exton, PA 19341

Tel: 610-524-7272 * Toll Free: 800-671-8622 * Fax: 610-524-7282

www.omegaflex.com

Product

Tee Fitting Tubing by Pipe Outlet for TracPipe and CounterStrike

Project Information

Job Name:	Date Submitted:
Location:	Submitted By:
Engineer:	Approved By:
Contractor:	Manufacturer's Rep:

Installation

Must be installed in accordance with the TracPipe Design Guide and Installation Instructions and all applicable codes

Application Information

Tee fittings for TracPipe and CounterStrike. Tubing Runs by Pipe Branch. Branch Thread is NPT

Technical Data

Materials

Nut, Adapter, and Split Rings	Yellow Brass
Insert and 1" Split Rings	Stainless Steel

Pressure Ratings (used with tubing)

Specification Operating Pressure	25 PSIG
CSA International Evaluation Report - Max Operating Pressure	125 PSIG

Temperature Ratings (used with tubing)

Operating Temperature Range	-20 to 200 Deg F
-----------------------------	------------------



Codes

ICC Codes (IFGC, IRC, IMC, IPC), NFPA 54, UPC, CAN/CSA B149.1, NFPA 58

Standards

ANSI LC1 / CSA 6.26, ANSI Z223.1

Listings

CSA, ICC PMG 1046 / 1058, IAPMO (UPC) File No. 3682 / ES ER-0227, FM (Factory Mutual)

Dimensional Information

✓	Size	P/N	NPT	Diameter across flats (Nom. in.)	TracPipe or CounterStrike Size	Weight (lbs)
<input type="checkbox"/>	1/2"	FGP-T500-750	3/4" MNPT	1-1/8"	1/2"	1
<input type="checkbox"/>	1/2"	FGP-T500-500	1/2" FNPT	1-1/8"	1/2"	1
<input type="checkbox"/>	3/4"	FGP-T750-500	1/2" FNPT	1-3/8"	3/4"	1.6
<input type="checkbox"/>	3/4"	FGP-T750-750	3/4" FNPT	1-3/8"	3/4"	1.6
<input type="checkbox"/>	1"	FGP-T1000-1000	1" FNPT	1-5/8"	1"	2.2

Product					
Tee Fitting Tubing by Tubing for TracPipe and CounterStrike					
Project Information					
Job Name:					
Location:					
Engineer:					
Contractor:					
Installation					
Must be installed in accordance with the TracPipe Design Guide and Installation Instructions and all applicable codes					
Application Information					
Tee fittings for TracPipe and CounterStrike. Tubing by Tubing Runs. Branch is Tubing.					
Technical Data					
Materials					
Nut, Adapter, and Split Rings		Yellow Brass			
Insert and 1" Split Rings		Stainless Steel			
Pressure Ratings (used with tubing)					
Specification Operating Pressure		25 psig			
CSA international Evaluation Report - Max Operating Pressure,					
3/8" through 1-1/4"		125 PSIG			
Temperature Ratings (used with tubing)					
Operating Temperature Range		-20 to 200 Deg F			
Codes					
ICC Codes (IFGC, IRC, IMC, IPC), NFPA 54, UPC, CAN/CSA B149.1, NFPA 58					
Standards					
ANSI LC1 / CSA 6.26, ANSI Z223.1					
Listings					
CSA, ICC PMG 1046 / 1058, IAPMO (UPC) File No. 3682 / ES ER-0227, FM (Factory Mutual)					
Dimensional Information					
✓			<i>R X R X B Sizes</i>	<i>Diameter across Hex flats R X R X B</i>	
	<i>Size</i>	<i>P/N</i>	<i>TracPipe or CounterStrike Sizes</i>	<i>(Nom. in.)</i>	<i>Weight (lbs)</i>
<input type="checkbox"/>	1/2"	FGP-TF500-T500	1/2" X 1/2" X 1/2"	1-1/8" x 1-1/8" x 1-1/8"	1.0
<input type="checkbox"/>	3/4"	FGP-TF750-T500	3/4" X 3/4" X 3/4"	1-3/8" x 1-3/8" x 1-3/8"	1.6
<input type="checkbox"/>	1"	FGP-TF1000-T1000	1" X 1" X 1"	1-5/8" x 1-5/8" x 1-5/8"	2.2
<input type="checkbox"/>	1/2"	FGP-RT-501	1/2" X 3/8" X 3/8"	1-1/8" x 1" x 1"	0.9
<input type="checkbox"/>	3/4"	FGP-RT-751	3/4" X 1/2" X 3/8"	1-5/8" x 1-3/8" x 1"	1.1
<input type="checkbox"/>	3/4"	FGP-RT-752	3/4" X 1/2" X 1/2"	1-5/8" x 1-3/8" x 1-3/8"	1.1
<input type="checkbox"/>	1"	FGP-RT-1001	1" X 3/4" X 1/2"	1-5/8" x 1-3/8" x 1-1/8"	1.8
<input type="checkbox"/>	1"	FGP-RT-1002	1" X 3/4" X 3/4"	1-5/8" x 1-3/8" x 1-3/8"	1.8
<input type="checkbox"/>	3/4"	FGP-TF750-T500	3/4" X 3/4" X 1/2"	1-3/8" x 1-3/8" x 1-1/8"	1.6
<input type="checkbox"/>	1"	FGP-TF1000-T750	1" X 1" X 3/4"	1-5/8" x 1-5/8" x 1-3/8"	2.1
<input type="checkbox"/>	1"	FGP-TF1000-T500	1" X 1" X 1/2"	1-5/8" x 1-5/8" x 1-1/8"	2.2
<input type="checkbox"/>	1-1/4"	FGP-TF1250-T1000	1-1/4" X 1-1/4" X 1"	2-1/8" x 2-1/8" x 1-5/8"	2.7
<input type="checkbox"/>	1-1/4"	FGP-TF1250-T750	1-1/4" X 1-1/4" X 3/4"	2-1/8" x 2-1/8" x 1-3/8"	2.6
<input type="checkbox"/>	1-1/4"	FGP-TF1250-T500	1-1/4" X 1-1/4" X 1/2"	2-1/8" x 2-1/8" x 1-1/8"	2.6
<input type="checkbox"/>	1-1/4"	FGP-RT-1251	1-1/4" X 1" X 1"	2-1/8" x 1-5/8" x 1-5/8"	2.2
<input type="checkbox"/>	1-1/4"	FGP-RT-1252	1-1/4" X 1" X 3/4"	2-1/8" x 1-5/8" x 1-3/8"	2.2
<input type="checkbox"/>	1-1/4"	FGP-RT-1253	1-1/4" X 1" X 1/2"	2-1/8" x 1-5/8" x 1-1/8"	2.1
<input type="checkbox"/>	1-1/2"	FGP-TF1500-T1250	1-1/2" X 1-1/2" X 1-1/4"	2-1/2" x 2-1/2" x 2-1/8"	4.4
<input type="checkbox"/>	1-1/2"	FGP-TF1500-T1000	1-1/2" X 1-1/2" X 1"	2-1/2" x 2-1/2" x 1-5/8"	4.1
<input type="checkbox"/>	1-1/2"	FGP-TF1500-T750	1-1/2" X 1-1/2" X 3/4"	2-1/2" x 2-1/2" x 1-3/8"	4.1
<input type="checkbox"/>	1-1/2"	FGP-TF1500-T500	1-1/2" X 1-1/2" X 1/2"	2-1/2" x 2-1/2" x 1-1/8"	4.0
<input type="checkbox"/>	1-1/2"	FGP-RT-1501	1-1/2" X 1-1/4" X 1-1/4"	2-1/2" x 2-1/8" x 2-1/8"	3.7
<input type="checkbox"/>	1-1/2"	FGP-RT-1502	1-1/2" X 1-1/4" X 1"	2-1/2" x 2-1/8" x 1-5/8"	3.6
<i>(P/Ns continued on next page)</i>					



Omega Flex, Inc. * 451 Creamery Way* Exton, PA 19341

Tel: 610-524-7272 * Toll Free: 800-671-8622 * Fax: 610-524-7282

www.omegaflex.com

Tee Fitting Tubing by Tubing for TracPipe and CounterStrike

Dimensional Information

✓	R X R X B Sizes				Weight (lbs)
	Size	*P/N	TracPipe or CounterStrike Sizes	Diameter across Hex flats R X R X B (Nom. in.)	
<input type="checkbox"/>	1-1/2"	FGP-RT-1503	1-1/2" x 1-1/4" x 3/4"	2-1/2" x 2-1/8" x 1-3/8"	3.6
<input type="checkbox"/>	1-1/2"	FGP-RT-1504	1-1/2" x 1-1/4" x 1/2"	2-1/2" x 2-1/8" x 1-1/8"	3.5
<input type="checkbox"/>	2"	FGP-TF2000-T1500	2" x 2" 1-1/2"	3-1/4" x 3-1/4" x 2-1/2"	7.4
<input type="checkbox"/>	2"	FGP-TF2000-T1250	2" x 2" x 1-1/4"	3-1/4" x 3-1/4" x 2-1/8"	7.2
<input type="checkbox"/>	2"	FGP-TF2000-T1000	2" x 2" x 1"	3-1/4" x 3-1/4" x 1-5/8"	7.0
<input type="checkbox"/>	2"	FGP-TF2000-T750	2" x 2" x 3/4"	3-1/4" x 3-1/4" x 1-3/8"	7.0
<input type="checkbox"/>	2"	FGP-TF2000-T500	2" x 2" x 1/2"	3-1/4" x 3-1/4" x 1-1/8"	7.0
<input type="checkbox"/>	2"	FGP-RT-2001	2" x 1-1/2" x 1-1/2"	3-1/4" x 2-1/2" x 2-1/2"	6.5
<input type="checkbox"/>	2"	FGP-RT-2002	2" x 1-1/2" x 1-1/4"	3-1/4" x 2-1/2" x 2-1/8"	6.3
<input type="checkbox"/>	2"	FGP-RT-2003	2" x 1-1/2" x 1"	3-1/4" x 2-1/2" x 1-5/8"	6.1
<input type="checkbox"/>	2"	FGP-RT-2004	2" x 1-1/2" x 3/4"	3-1/4" x 2-1/2" x 1-3/8"	6.1
<input type="checkbox"/>	2"	FGP-RT-2005	2" x 1-1/2" x 1/2"	3-1/4" x 2-1/2" x 1-1/8"	6.1

Omega Flex, Inc. * 451 Creamery Way* Exton, PA 19341
 Tel: 610-524-7272 * Toll Free: 800-671-8622 * Fax: 610-524-7282
www.omegaflex.com

FGP-SUB-015

Rev. 03-11

TracPipe, CounterStrike, PS-II, AutoFlare, and AutoTrip are registered trademarks of Omega Flex, Inc.

page 2/2

Product

Key Valve Bracket Assembly for TracPipe and CounterStrike

Project Information

Job Name:	Date Submitted:
Location:	Submitted By:
Engineer:	Approved By:
Contractor:	Manufacturer's Rep:

Installation

Must be installed in accordance with the TracPipe Design Guide and Installation Instructions and all applicable codes

Application Information

Use for but not limited to rigid mount of fireplace key valve for TracPipe and CounterStrike. May be used indoor, outdoor and in concealed locations.

Technical Data

Materials

Nut, Adapter, and Split Rings	Yellow Brass
Insert	Stainless Steel
Bracket	Galvanized Steel

Pressure Ratings (used with tubing)

Specification Operating Pressure	25 PSIG
CSA International Evaluation Report - Max Operating Pressure	
3/8" through 3/4"	125 PSIG

Temperature Ratings (used with tubing)

Operating Temperature Range	-20 to 200 Deg F
-----------------------------	------------------



Codes

ICC Codes (IFGC, IRC, IMC, IPC), NFPA 54, UPC, CAN/CSA B149.1, NFPA 58

Standards

ANSI LC1 / CSA 6.26, ANSI Z223.1

Listings

CSA, ICC PMG 1046 / 1058, IAPMO (UPC) File No. 3682 / ES ER-0227, FM (Factory Mutual)

Dimensional Information

✓			Diameter	TracPipe or	Weight (lbs)
	Size	P/N	across flats (Nom. in.)	CounterStrike Size	
<input type="checkbox"/>	3/8"	FGP-KVB-375	1"	3/8"	0.50
<input type="checkbox"/>	1/2"	FGP-KVB-500	1-1/8"	1/2"	0.54
<input type="checkbox"/>	3/4" x 1/2"	FGP-KVB750-500	1-3/8"	3/4"	0.77

Product

Meter Termination Stub-Out (Male - NPT)

Project Information

Job Name:	Date Submitted:
Location:	Submitted By:
Engineer:	Approved By:
Contractor:	Manufacturer's Rep:

Installation

Must be installed in accordance with the TracPipe Design Guide and Installation Instructions and all applicable codes

Application Information

Schedule 40 B.I.P. Meter Stub-Out

Technical Data

Materials

Schedule 40 Black Iron Pipe

Pressure Ratings (used with tubing)

Specification Operating Pressure	25 PSIG
CSA International Evaluation Report - Max Operating Pressure	
3/8" through 1"	125 PSIG

Temperature Ratings (used with tubing)

Operating Temperature Range	-20 to 200 Deg F
-----------------------------	------------------



Codes

ICC Codes (IFGC, IRC, IMC, IPC), NFPA 54 , UPC, CAN/CSA B149.1, NFPA 58

Standards

Listings

Dimensional Information

✓	Size	P/N	Mounting Flange Dim (Nom. in.)	Fitting length (Nom. in.)	TracPipe or CounterStrike Size	Weight (lbs)
<input type="checkbox"/>	1" x 6"	FGP-1X6 MT	5" x 5"	6"	N/A	1.35
<input type="checkbox"/>	1" x 12"	FGP-1X12 MT	5" x 5"	12"	N/A	1.95

Omega Flex, Inc. * 451 Creamery Way* Exton, PA 19341

Tel: 610-524-7272 * Toll Free: 800-671-8622 * Fax: 610-524-7282

www.omegaflex.com

Product

Meter Stud Bracket

Project Information

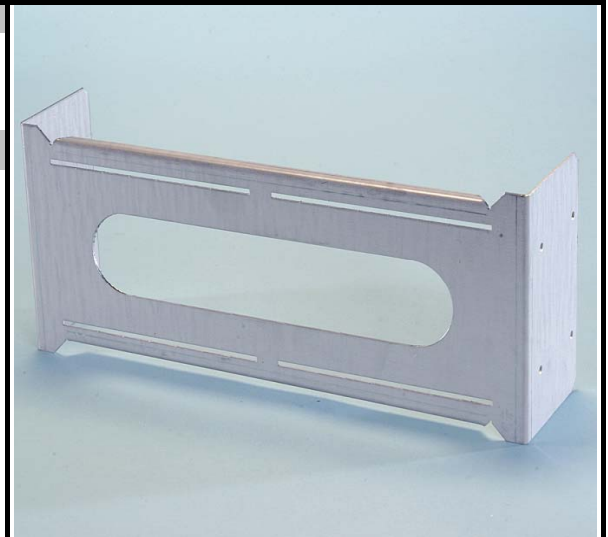
Job Name:	Date Submitted:
Location:	Submitted By:
Engineer:	Approved By:
Contractor:	Manufacturer's Rep:

Installation

Must be installed in accordance with the TracPipe Design Guide and Installation Instructions and all applicable codes

Application Information

For use with FGP-MT Series Meter Terminations (optional) Fits between standard 16" O.C. framing



Technical Data

Materials

Galvanized Steel

Pressure Ratings (used with tubing)

N/A

Temperature Ratings (used with tubing)

Operating Temperature Range -20 to 200 Deg F


Codes

Standards

Listings

Dimensional Information

	Size	P/N	L x H x D	Weight (lbs)
<input checked="" type="checkbox"/>	All	FGP-STUD-BRAC	14-1/2" x 6" x 3-3/8"	2.1

Product										
Appliance Stub Out for Use with TracPipe and CounterStrike										
Project Information										
Job Name:			Date Submitted:							
Location:			Submitted By:							
Engineer:			Approved By:							
Contractor:			Manufacturer's Rep:							
Installation										
Must be installed in accordance with the TracPipe Design Guide and Installation Instructions and all applicable codes										
Application Information										
Schedule 40 B.I.P. stub out for use at movable appliance locations, with mounting plate										
Technical Data										
<u>Materials</u>										
Schedule 40 B.I.P.										
Mounting Plate 12 Ga. Carbon Steel										
<u>Pressure Ratings (used with tubing)</u>										
Specification Operating Pressure			25 PSIG							
CSA International Evaluation Report - Max Operating Pressure, 3/8" through 1-1/4"			125 PSIG							
<u>Temperature Ratings (used with tubing)</u>										
Operating Temperature Range			-20 to 200 Deg F							
Codes										
Standards										
NPT Thread per ANSI B1.20.1										
Listings										
Dimensional Information										
✓	<i>Size</i>	<i>P/N</i>	<i>Mounting Flange Dim (Nom)</i>	<i>Fitting length (Nom. in.)</i>	<i>TracPipe or CounterStrike Size</i>	<i>Weight (lbs)</i>				
<input type="checkbox"/>	1/2"	FGP-ASP-500	5" x 5"	2-9/16"	1/2"	0.72				

Omega Flex, Inc. * 451 Creamery Way* Exton, PA 19341

Tel: 610-524-7272 * Toll Free: 800-671-8622 * Fax: 610-524-7282

www.omegaflex.com

Product

Fireplace Stub-Out (Male - NPT) for Use with TracPipe and CounterStrike

Project Information

Job Name:	Date Submitted:
Location:	Submitted By:
Engineer:	Approved By:
Contractor:	Manufacturer's Rep:

Installation

Must be installed in accordance with the TracPipe Design Guide and Installation Instructions and all applicable codes

Application Information

Mounting plate with NPT B.I.P. Nipple. Angled to match the fireplace cabinet penetration requirements.



Technical Data

Materials

Schedule 40 B.I.P.
Mounting Plate 12 ga. Carbon Steel

Pressure Ratings (used with tubing)

Specification Operating Pressure 25 PSIG
CSA International Evaluation Report - Max Operating Pressure, 3/8" through 1-1/4" 125 PSIG

Temperature Ratings (used with tubing)

Operating Temperature Range -20 to 200 Deg F

Codes

Standards

NPT Threads per ANSI B1.20.1

Listings

Dimensional Information

<input checked="" type="checkbox"/>	Size	P/N	Flange Mount Dim (Nom)	Fitting length (Nom. in.)	TracPipe or CounterStrike Size	Weight (lbs)
<input type="checkbox"/>	1/2"	FGP-FPT-500	5" x 5"	5-1/2"	1/2"	0.72

Omega Flex, Inc. * 451 Creamery Way*Exton, PA 19341

Tel: 610-524-7272 * Toll Free: 800-671-8622 * Fax: 610-524-7282

www.omegaflex.com

Product

Meter Termination for use with TracPipe and CounterStrike

Project Information

Job Name:	Date Submitted:
Location:	Submitted By:
Engineer:	Approved By:
Contractor:	Manufacturer's Rep:

Installation

Must be installed in accordance with the TracPipe Design Guide and Installation Instructions and all applicable codes

Application Information

Meter Termination incorporating the AutoFlare fitting.

Technical Data

Materials

Nut, Adapter, Flange and Split Rings	Yellow Brass
Insert and 1" split rings	Stainless Steel
Mounting Plate & Pipe	Steel

Pressure Ratings (used with tubing)

Specification Operating Pressure	25 PSIG
CSA International Evaluation Report - Max Operating Pressure, 3/8" through 1-1/4"	125 PSIG

Temperature Ratings (used with tubing)

Operating Temperature Range	-20 to 200 Deg F
-----------------------------	------------------



Codes

ICC Codes (IFGC, IRC, IMC, IPC), NFPA 54, UPC, CAN/CSA B149.1, NFPA 58

Standards

ANSI LC1 / CSA 6.26, ANSI Z223.1

Listings

CSA, ICC PMG 1046 / 1058, IAPMO (UPC) File No. 3682 / ES ER-0227, FM (Factory Mutual)

Dimensional Information

✓	Size	P/N	Diameter across flats (Nom. in.)		Fitting length (Nom. in.)	TracPipe or CounterStrike Size	Weight (lbs)
			Nut	Body			
<input type="checkbox"/>	1/2"	FGP-MT6-500	1-5/8"	1-1/8"	6"	1/2"	1.8
<input type="checkbox"/>	3/4"	FGP-MT6-750	1-5/8"	1-3/8"	6"	3/4"	1.8
<input type="checkbox"/>	1"	FGP-MT6-1000	1-5/8"	1-5/8"	6"	1"	1.8
<input type="checkbox"/>	1"	FGP-MT9-1000	1-5/8"	1-5/8"	9"	1"	2.6
<input type="checkbox"/>	1/2"	FGP-MT12-500	1-5/8"	1-1/8"	12"	1/2"	2.6
<input type="checkbox"/>	3/4"	FGP-MT12-750	1-5/8"	1-3/8"	12"	3/4"	2.6
<input type="checkbox"/>	1"	FGP-MT12-1000	1-5/8"	1-5/8"	12"	1"	2.6

Omega Flex, Inc. * 451 Creamery Way* Exton, PA 19341

Tel: 610-524-7272 * Toll Free: 800-671-8622 * Fax: 610-524-7282

www.omegaflex.com

Product

Meter Termination Bracket for TracPipe and CounterStrike

Project Information

Job Name:	Date Submitted:
Location:	Submitted By:
Engineer:	Approved By:
Contractor:	Manufacturer's Rep:

Installation

Must be installed in accordance with the TracPipe Design Guide and Installation Instructions and all applicable codes

Application Information

Used with FGP-MT Meter Termination series

Technical Data

Materials

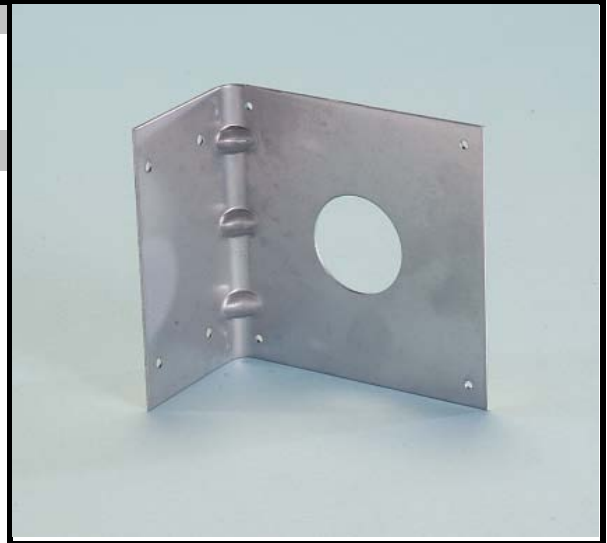
Galvanized Steel

Pressure Ratings (used with tubing)

N/A

Temperature Ratings (used with tubing)

Operating Temperature Range -20 to 200 Deg F



Codes

Standards

Listings

Dimensional Information

	Size	P/N	L x H x D	TracPipe or CounterStrike Size	Weight (lbs)
<input type="checkbox"/>	All	FGP-MT-BRAC	5" x 5" x 2-3/4"	1/2" THRU 1"	0.8

Omega Flex, Inc. * 451 Creamery Way* Exton, PA 19341

Tel: 610-524-7272 * Toll Free: 800-671-8622 * Fax: 610-524-7282

www.omegaflex.com

Product										
Metal Wall Box with 90° Valve Assembly for use with TracPipe and CounterStrike										
Project Information										
Job Name:					Date Submitted:					
Location:					Submitted By:					
Engineer:					Approved By:					
Contractor:					Manufacturer's Rep:					
Installation										
Must be installed in accordance with the TracPipe Design Guide and Installation Instructions and all applicable codes										
Application Information										
Metal wall box with valve for use with zero clearance appliance installations. Reverse Mounting tabs to accommodate double sheetrock walls. For Indoor Use Only. Wall Box is Fire Rated to UL 1479.										
Technical Data										
<u>Materials</u>										
Nut, Adapter, Flange and Split Rings			Yellow Brass							
Insert			Stainless Steel							
Wall Box			Powder Coated Steel							
<u>Pressure Ratings (used with tubing)</u>										
Specification Operating Pressure			1/2 PSIG							
Max Test Pressure			60 PSIG							
<u>Temperature Ratings (used with tubing)</u>										
Operating Temperature Range			-20 to 200 Deg F							
Codes										
ICC Codes (IFGC, IRC, IMC, IPC), NFPA 54, UPC, CAN/CSA B149.1, NFPA 58										
Standards										
ANSI LC1 / CSA 6.26, ANSI Z21.15, ANSI Z223.1, UL 1479										
Listings										
CSA, ICC PMG 1046 / 1058, IAPMO (UPC) File No. 3682 / ES ER-0227, FM (Factory Mutual)										
Dimensional Information										
✓			<i>Diameter across flats</i>				<i>TracPipe or CounterStrike</i>			
			<i>(Nom. in.)</i>				<i>Valve Outlet</i>			
<input type="checkbox"/>	<i>Size</i>	<i>P/N</i>	<i>Nut</i>	<i>Valve Body</i>	<i>Box Dim L x H x D</i>		<i>Trim Ring Dim</i>	<i>NPT</i>	<i>Size</i>	<i>Weight (lbs)</i>
<input type="checkbox"/>	3/8"	FGP-WBTM-375	1"	1-1/8"	5" x 5" x 3-1/8"		6-3/4" x 6-3/4"	1/2"	3/8"	2.3
<input type="checkbox"/>	1/2"	FGP-WBTM-500	1-1/8"	1-1/8"	5" x 5" x 3-1/8"		6-3/4" x 6-3/4"	1/2"	1/2"	2.3
<input type="checkbox"/>	3/4"	FGP-WBTM-750	1-3/8"	1-3/8"	5" x 5" x 3-1/8"		6-3/4" x 6-3/4"	3/4"	3/4"	2.8



Omega Flex, Inc. * 451 Creamery Way* Exton, PA 19341

Tel: 610-524-7272 * Toll Free: 800-671-8622 * Fax: 610-524-7282

www.omegaflex.com

Product

Manifolds for use with TracPipe and CounterStrike

Project Information

Job Name:	Date Submitted:
Location:	Submitted By:
Engineer:	Approved By:
Contractor:	Manufacturer's Rep:

Installation

Must be installed in accordance with the TracPipe Design Guide and Installation Instructions and all applicable codes

Application Information

Manifolds used to facilitate parallel piping installations. May be used in concealed locations on low pressure systems without Line Pressure regulators.



Technical Data

Materials

Cast Iron

Pressure Ratings (used with tubing)

Specification Operating Pressure	25 PSIG
CSA International Evaluation Report - Max Operating Pressure, 3/8" through 1-1/4"	125 PSIG

Temperature Ratings (used with tubing)

Operating Temperature Range	-20 to 200 Deg F
-----------------------------	------------------

Codes

ICC Codes (IFGC, IRC, IMC, IPC), NFPA 54, UPC, CAN/CSA B149.1, NFPA 58

Standards

ANSI LC1 / CSA 6.26, ANSI Z223.1

Listings

CSA, ICC PMG 1046 / 1058, IAPMO (UPC) File No. 3682 / ES ER-0227

Dimensional Information

✓	P/N	OD (Nom. in.)	Manifold		Port Size	Weight (lbs)
			length (Nom. in.)	Run Sizes		
<input type="checkbox"/>	FGP-MI-PC	1-1/2"	9-5/8"	1/2", 3/4"	1/2"	1.9
<input type="checkbox"/>	FGP-MI-PC-1X	2"	11-1/2"	1", 1-1/4"	3/4"	5.5
<input type="checkbox"/>	FGP-MI-PC-2X	3-1/8"	14-5/8"	1-1/2", 2"	1"	13

Omega Flex, Inc. * 451 Creamery Way* Exton, PA 19341

Tel: 610-524-7272 * Toll Free: 800-671-8622 * Fax: 610-524-7282

www.omegaflex.com

Product

Manifold Bracket

Project Information

Job Name:	Date Submitted:
Location:	Submitted By:
Engineer:	Approved By:
Contractor:	Manufacturer's Rep:

Installation

Must be installed in accordance with the TracPipe Design Guide and Installation Instructions and all applicable codes

Application Information

For use with FGP-MI-PC manifold only

Technical Data

Materials

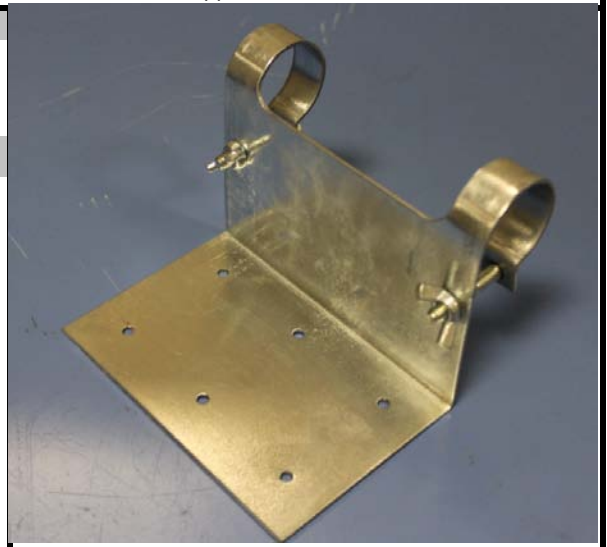
Galvanized Steel

Pressure Ratings (used with tubing)

N/A

Temperature Ratings (used with tubing)

Operating Temperature Range -20 to 200 Deg F



Codes

Standards

Listings

Dimensional Information

✓	P/N	L x H x D	Weight (lbs)
<input type="checkbox"/>	FGP-MB2	5-1/4" x 5-1/4" x 4"	1.3

Product

Stackable Manifold

Project Information

Job Name:	Date Submitted:
Location:	Submitted By:
Engineer:	Approved By:
Contractor:	Manufacturer's Rep:

Installation

Must be installed in accordance with the TracPipe Design Guide and Installation Instructions and all applicable codes

Application Information

Two port manifolds with pressure test port designed for smaller systems and to facilitate additional outlets to existing manifold installations. Equipped with a 1/4" Pressure test port.

Technical Data

Materials

Cast Iron

Pressure Ratings (used with tubing)

Specification Operating Pressure	25 PSIG
CSA International Evaluation Report - Max Operating Pressure, 3/8" through 1-1/4"	125 PSIG

Temperature Ratings (used with tubing)

Operating Temperature Range	-20 to 200 Deg F
-----------------------------	------------------



Codes

ICC Codes (IFGC, IRC, IMC, IPC), NFPA 54, UPC, CAN/CSA B149.1, NFPA 58

Standards

ANSI LC1 / CSA 6.26, ANSI Z223.1

Listings

CSA, ICC PMG 1046 / 1058, IAPMO (UPC) File No. 3682 / ES ER-0227

Dimensional Information

✓	Size	P/N	Manifold		Run		Weight (lbs)
			OD (Nom In.)	Length (Nom In.)	Port Size	FNPT - MNPT	
<input type="checkbox"/>	1/2"	FGP-MI-ST-500	1-3/8"	6"	1/2"	1/2" - 1/2"	1.4
<input type="checkbox"/>	3/4"	FGP-MI-ST-750	1-3/8"	6"	1/2"	3/4" - 3/4"	1.4

Omega Flex, Inc. * 451 Creamery Way* Exton, PA 19341

Tel: 610-524-7272 * Toll Free: 800-671-8622 * Fax: 610-524-7282

www.omegaflex.com

Product

Stackable Manifold Bracket

Project Information

Job Name:	Date Submitted:
Location:	Submitted By:
Engineer:	Approved By:
Contractor:	Manufacturer's Rep:

Installation

Must be installed in accordance with the TracPipe Design Guide and Installation Instructions and all applicable codes

Application Information

Mounting bracket for use with Stackable Manifolds

Technical Data

Materials

Galvanized Steel

Pressure Ratings (used with tubing)

N/A

Temperature Ratings (used with tubing)

Operating Temperature Range -20 to 200 Deg F

Codes

Standards

Listings

Dimensional Information

✓	P/N	L x H x W	Weight (lbs)
<input type="checkbox"/>	FGP-MB-ST	4" x 4-1/2" x 1-1/2"	0.4



Product

Load Center w/ Manifold Bracket for use with TracPipe and CounterStrike

Project Information

Job Name:	Date Submitted:
Location:	Submitted By:
Engineer:	Approved By:
Contractor:	Manufacturer's Rep:

Installation

Must be installed in accordance with the TracPipe Design Guide and Installation Instructions and all applicable codes

Application Information

For use with FGP-MI-PC Manifold and FGP-REG-3 Regulator only. Load center will mount between standard 16" O.C. Studs. Does not include piping or Regulator.



Technical Data

Materials

Powder Coated Steel

Pressure Ratings (used with tubing)

N/A

Temperature Ratings (used with tubing)

Operating Temperature Range -20 to 200 Deg F

Codes

Standards

Listings

Dimensional Information

✓	Size	P/N	L x W x D	Weight (lbs)
<input type="checkbox"/>		FGP-LC	25-1/4" x 15-3/4" x 4-1/4"	11.3

Product

Bonding Clamps

Project Information

Job Name:	Date Submitted:
Location:	Submitted By:
Engineer:	Approved By:
Contractor:	Manufacturer's Rep:

Installation

Must be installed in accordance with the TracPipe Design Guide and Installation Instructions and all applicable codes

Application Information

UL 467 Tested Bonding Clamp for use on Pipe and Brass Fitting Hex Flats.

Technical Data

Materials

Body	Brass
Screw	Stainless Steel

Pressure Ratings (used with tubing)

N/A

Temperature Ratings (used with tubing)

Operating Temperature Range -20 to 200 Deg F



Codes

NFPA 780

Standards

UL 467/CSA C22.2

Listings

UL

Dimensional Information

✓	P/N	TracPipe or CounterStrike Size	Weight (lbs)
<input type="checkbox"/>	FGP-GC-1	3/8", 1/2", 3/4"	0.2
<input type="checkbox"/>	FGP-GC-2	1", 1-1/4"	0.4
<input type="checkbox"/>	FGP-GC-3	1-1/2", 2"	1.0

Omega Flex, Inc. * 451 Creamery Way* Exton, PA 19341

Tel: 610-524-7272 * Toll Free: 800-671-8622 * Fax: 610-524-7282

www.omegaflex.com

Product

PS-II Adapter Assembly (Male NPT)

Project Information

Job Name:	Date Submitted:
Location:	Submitted By:
Engineer:	Approved By:
Contractor:	Manufacturer's Rep:

Installation

Must be installed in accordance with the TracPipe Design Guide and Installation Instructions and all applicable codes

Application Information

Connection of PS-II to NPT fitting.

Technical Data

Materials

Nut, Adapter, Flange and Split Rings	Yellow Brass
Insert and 1" Split Ring	Stainless Steel

Pressure Ratings (used with tubing)

Specification Operating Pressure	25 PSIG
Max Test Pressure	40 PSIG

Temperature Ratings (used with tubing)

Operating Temperature Range	-20 to 200 Deg F
-----------------------------	------------------



Codes

ICC Codes (IFGC, IRC, IMC, IPC), NFPA 54 , UPC, CAN/CSA B149.1, NFPA 58

Standards

ANSI LC1 / CSA 6.26, ANSI Z223.1

Listings

CSA, ICC PMG 1046 / 1052, IAPMO (UPC) File No. 4665, FM (Factory Mutual)

Dimensional Information

✓	Size	P/N	Diameter across flats (Nom. in.)	Fitting length (Nom. in.)	TracPipe or CounterStrike Size	Weight (lbs)
<input type="checkbox"/>	3/8"	FGP-UGF-375	1"	3-3/4"	3/8"	0.45
<input type="checkbox"/>	1/2"	FGP-UGF-500	1-1/8"	3-7/8"	1/2"	0.50
<input type="checkbox"/>	3/4"	FGP-UGF-750	1-3/8"	4-1/8"	3/4"	0.65
<input type="checkbox"/>	1"	FGP-UGF-1000	1-5/8"	4-3/4"	1"	0.90
<input type="checkbox"/>	1-1/4"	FGP-UGF-1250	2-5/8"	5-1/4"	1-1/4"	1.60
<input type="checkbox"/>	1-1/2"	FGP-UGF-1500	3"	5-7/8"	1-1/2"	2.65
<input type="checkbox"/>	2"	FGP-UGF-2000	3-1/16"	6-1/2"	2"	4.30

Product

PS-II Coupling Assembly

Project Information

Job Name:	Date Submitted:
Location:	Submitted By:
Engineer:	Approved By:
Contractor:	Manufacturer's Rep:

Installation

Must be installed in accordance with the TracPipe Design Guide and Installation Instructions and all applicable codes

Application Information

Connection of identical sizes of PS-II.

Technical Data

Materials

Nut, Adapter, Flange and Split Rings	Yellow Brass
Insert and 1" Split Ring	Stainless Steel

Pressure Ratings (used with tubing)

Specification Operating Pressure	25 PSIG
Max Test Pressure	40 PSIG

Temperature Ratings (used with tubing)

Operating Temperature Range	-20 to 200 Deg F
-----------------------------	------------------



Codes

ICC Codes (IFGC, IRC, IMC, IPC), NFPA 54, UPC, CAN/CSA B149.1, NFPA 58

Standards

ANSI LC1 / CSA 6.26, ANSI Z223.1

Listings

CSA, ICC PMG 1046 / 1052, IAPMO (UPC) File No. 4665, FM (Factory Mutual)

Dimensional Information

✓	Size	P/N	Diameter across flats (Nom. in.)	Fitting length (Nom. in.)	TracPipe or CounterStrike Size	Weight (lbs)
<input type="checkbox"/>	3/8"	FGP-UGC-375	1"	6"	3/8"	0.65
<input type="checkbox"/>	1/2"	FGP-UGC-500	1-1/8"	6-1/4"	1/2"	0.70
<input type="checkbox"/>	3/4"	FGP-UGC-750	1-3/8"	7-1/8"	3/4"	1.05
<input type="checkbox"/>	1"	FGP-UGC-1000	1-5/8"	7-5/8"	1"	1.40
<input type="checkbox"/>	1-1/4"	FGP-UGC-1250	2-5/8"	8-3/8"	1-1/4"	2.50
<input type="checkbox"/>	1-1/2"	FGP-UGC-1500	3"	10-1/8"	1-1/2"	4.25
<input type="checkbox"/>	2"	FGP-UGC-2000	3-1/16"	10-5/8"	2"	6.90

Omega Flex, Inc. * 451 Creamery Way* Exton, PA 19341

Tel: 610-524-7272 * Toll Free: 800-671-8622 * Fax: 610-524-7282

www.omegaflex.com

Product

Striker Plates

Project Information

Job Name:	Date Submitted:
Location:	Submitted By:
Engineer:	Approved By:
Contractor:	Manufacturer's Rep:

Installation

Must be installed in accordance with the TracPipe Design Guide and Installation Instructions and all applicable codes

Application Information

Protection from Potential Puncture

Technical Data

Materials

Hardened Steel RB >75

Pressure Ratings (used with tubing)

N/A

Temperature Ratings (used with tubing)

Operating Temperature Range N/A



Codes

ICC Codes (IFGC, IRC, IMC, IPC), NFPA 54 , UPC, CAN/CSA B149.1, NFPA 58, UPC

Standards

ANSI LC1 / CSA 6.26, ANSI Z223.1

Listings

CSA, ICC PMG 1046 / 1052/ 1058 IAPMO (UPC) File No.3682 / 4665 / ES ER-0227

Dimensional Information

✓	P/N	L x W	Weight (lbs)
<input type="checkbox"/>	FGP-SP-025	1-1/2" x 3"	0.1
<input type="checkbox"/>	FGP-SP-050	6-1/2" x 3"	0.3
<input type="checkbox"/>	FGP-SP-075	8" x 3"	0.4
<input type="checkbox"/>	FGP-SP-100	11-1/2" x 3"	0.6
<input type="checkbox"/>	FGP-SP-617	17" x 6-1/2"	1.8

Omega Flex, Inc. * 451 Creamery Way* Exton, PA 19341

Tel: 610-524-7272 * Toll Free: 800-671-8622 * Fax: 610-524-7282

www.omegaflex.com

Product

Ball Valve - Full Flow

Project Information

Job Name:	Date Submitted:
Location:	Submitted By:
Engineer:	Approved By:
Contractor:	Manufacturer's Rep:

Installation

Must be installed in accordance with the TracPipe Design Guide and Installation Instructions and all applicable codes

Application Information

Ball valve for installation upstream of the Line Pressure Regulator in elevated pressure systems. May be used for appliance shu-off valave

Technical Data

Materials

Yellow Brass

Pressure Ratings (used with tubing)

Specification Operating Pressure	25 PSIG
Max Test Pressure	100 PSIG

Temperature Ratings (used with tubing)

Operating Temperature Range	-20 to 200 Deg F
-----------------------------	------------------



Codes

ICC Codes (IFGC, IRC, IMC, IPC), NFPA 54 /, UPC, CAN/CSA B149.1, NFPA 58, UPC

Standards

ANSI LC1 / CSA 6.26, ANSI Z22.15, ANSI Z223.1, ASME B16.33 or ASME B16.44

Listings

CSA, ICC PMG 1046 / 1052, 1058 IAPMO (UPC) File No.3682 / 4665 / ES ER-0227

Dimensional Information

✓	Size	P/N	Valve length (Nom. in.)	Weight (lbs)
<input type="checkbox"/>	1/2"	FGP-WBV-500	2-1/4"	0.5
<input type="checkbox"/>	3/4"	FGP-WBV-750	2-3/4"	0.8

OmegaFlex, Inc. * 451 Creamery Way* Exton, PA 19341

Tel: 610-524-7272 * Toll Free: 800-671-8622 * Fax: 610-524-7282

www.omegaflex.com

Product

Quick Disconnect with Appliance Shut-Off Valve

Project Information

Job Name:	Date Submitted:
Location:	Submitted By:
Engineer:	Approved By:
Contractor:	Manufacturer's Rep:

Installation

Must be installed in accordance with the TracPipe Design Guide and Installation Instructions and all applicable codes

Application Information

For use at but not limited to outdoor BBQ and Patio Heater Locations. Indoor and outdoor use

Technical Data

Materials

Yellow Brass

Pressure Ratings (used with tubing)

Specification Operating Pressure	1/2 psig
Max Test Pressure	40 PSIG

Temperature Ratings (used with tubing)

Operating Temperature Range	-20 to 200 Deg F
-----------------------------	------------------



Codes

ICC Codes (IFGC, IRC, IMC, IPC), NFPA 54, UPC, CAN/CSA B149.1, NFPA 58, UPC

Standards

ANSI Z21.41/CSA-6.9 or ANSI Z21.90/CSA-6.24, ANSI Z223.1

Listings

CSA, ICC PMG 1046 / 1052 / 1058 IAPMO (UPC) File No. 3682 / 4665 / ES ER-0227

Dimensional Information

	Size	P/N	Valve length (Nom. in.)	Weight (lbs)
<input checked="" type="checkbox"/>	1/2"	FGP-QDS	4-1/4"	0.9

Omega Flex, Inc. * 451 Creamery Way* Exton, PA 19341

Tel: 610-524-7272 * Toll Free: 800-671-8622 * Fax: 610-524-7282

www.omegaflex.com

Product								
Excess Flow Valves								
Project Information								
Job Name:				Date Submitted:				
Location:				Submitted By:				
Engineer:				Approved By:				
Contractor:				Manufacturer's Rep:				
Installation								
Must be installed in accordance with the TracPipe Design Guide and Installation Instructions and all applicable codes								
Application Information								
Use LFD's downstream of the Meter Outlet prior to the service entrance as well as the branch run of a tee fitting or the outlet of a manifold port. Use AFD's downstream of the appliance shut - off valve and the flare inlet to a flexible								
Technical Data								
<u>Materials</u>								
LFD: Nickel Plated Brass, Polyamide, POM or PTFE								
AFD: Nickel Plated Brass, Polyamide, Stainless Steel								
<u>Pressure Ratings (used with tubing)</u>								
Specification Operating Pressure			LFD: 5" w.c. - 2 PSIG					
			AFD: 5" w.c. - 1/2 PSIG					
<u>Temperature Ratings (used with tubing)</u>								
Operating Temperature Range			LFD: -20 to 150°F					
			AFD: 32 to 150°F					
Codes								
NFPA 54, UPC								
Standards								
IAS US Requirements 3-92, ANSI Z223.1								
Listings								
CSA, CA-DSA, IAPMO File No. 5031, City of LA								
Dimensional Information								
✓	EFV - Type Application	P/N	Mounting Position	Inlet Thread Connection(s) (MNPT & FNPT)	Outlet Thread Connection(s)	Max Load (BTU/hr)	Nominal Closure Flow Rate (SCFH)	Weight (lbs)
<input type="checkbox"/>	Appl Connector	FGP-AFD-80	Multipoise	1/2" & 3/8"	3/8" SAE Flare	80000	110	0.20
<input type="checkbox"/>	Appl Connector	FGP-AFD-100A	Multipoise	1/2" & 3/8"	1/2" SAE Flare	100000	175	0.20
<input type="checkbox"/>	Appl Connector	FGP-AFD-130A	Multipoise	1/2" & 3/8"	5/8" SAE Flare	130000	200	0.20
<input type="checkbox"/>	Appl Connector	FGP-AFD-130B	Multipoise	3/4" & 1/2"	5/8" SAE Flare	130000	200	0.30
<input type="checkbox"/>	Appl Branch	FGP-LFD-70	Vertical Only	3/4" & 1/2"	3/4" MNPT & 1/2" FNPT	70000	97	0.22
<input type="checkbox"/>	Appl Branch	FGP-LFD-125	Vertical Only	3/4" & 1/2"	3/4" MNPT & 1/2" FNPT	125000	147	0.22
<input type="checkbox"/>	Meter / Branch	FGP-LFD-275A	Vertical Only	3/4" & 1/2"	3/4" MNPT & 1/2" FNPT	275000	335	0.22
<input type="checkbox"/>	Meter / Branch	FGP-LFD-275B	Vertical Only	1" & 3/4"	1" MNPT & 3/4" FNPT	275000	335	0.40
<input type="checkbox"/>	Meter / Branch	FGP-LFD-375	Vertical Only	1" & 3/4"	1" MNPT & 3/4" FNPT	375000	460	0.40
<input type="checkbox"/>	Meter / Branch	FGP-LFD-500	Vertical Only	1-1/4" & 1"	1-1/4" MNPT & 1" FNPT	500000	685	0.75



Omega Flex, Inc. * 451 Creamery Way* Exton, PA 19341
 Tel: 610-524-7272 * Toll Free: 800-671-8622 * Fax: 610-524-7282
 www.omegaflex.com