

TracPipe Specifier for Windows User Manual Release 3.50

Prepared by Synergis Technologies, Inc.
July 2007

Table of Contents

<i>Program Description:</i>	1
<i>Features:</i>	1
<i>Installation:</i>	2
Software Requirements:	2
Operating System:	2
Required Software:	2
Hardware:	2
Installation Instructions:	3
Uninstalling Instructions:	6
<i>The Specifier Environment</i>	8
Main Window	8
Main Menu	9
Toolbars	9
The Standard Toolbar	9
The TracPipe Toolbar	9
<i>Using TracPipe Specifier for Windows</i>	10
Working with a TracPipe System	10
Creating a new system	10
Opening a system	11
Saving a system	11
Closing a system	11
Printing a system	12
Modifying a TracPipe System	13
System Properties	13
Adding an Appliance	14
Adding a Regulator	15
Adding a Manifold	16
Adding a Connector	17
Working with TracPipe System Components	18
Modifying a Pipe Segment	18
Moving a component	19
Modifying a component	19
Deleting a component	26
Calculating the System	27
Working with the System Bill of Material	28
Displaying Bill of Material	28
Export as text	29
Export as spreadsheet	29

Export as PDF	30
Place on system drawing	30
Specifier Options	31

Program Description:

This specifier application is designed to allow the end users of Omegaflex's TracPipe to quickly and easily design and size systems using the TracPipe product.

This application allows you to create systems, save these systems and re-open them later. During the creation of a system you are prompted for information like the type of system gas (natural gas or propane), system pressure, and system pressure drop. Once you have created the system, you go about the process of adding items to the system. These items are a regulator, connector such as a tee or manifold, or an appliance. To generate a complete system, you create numerous items of these types. As you add an item to the system you are prompted for information like the distance from the item it is being connected to, the number of ports, or the appliance type and capacity. Once you have defined these values the item is added to the diagram and a pipe and any necessary fittings are generated.

After you generate the diagram of the system, you can calculate the piping sizes using the 'Calculate Size' command. This command determines the pipe sizes using the sizing tables. Once the pipe sizes are determined the pipes are labeled with their size. During the sizing process any regulator added to the system is also sized.

At any point during the process you can print the system diagram or generate a bill of material. The bill of material will not include sizes if you have not calculated the sizes yet. The bill of material can either be printed or saved to a PDF, XLS or RTF file format.

Features:

- Installation package configured so that it is downloadable from a web site
- Single meter systems only
- Allows a mix of series and parallel in a single system
- Unlimited appliances per system
- Unlimited regulators per system
- Unlimited manifolds per system
- Sizeable dialog for ease of diagram creation
- Right mouse click options on graphics
- Print preview
- Print of graphics in color or black and white
- Bill of material output in PDF, XLS, or RTF
- Ability to save and re-open systems to a .TPS file format.
- Automatic regulator sizing

Installation:

Software Requirements:

Operating System:

Windows 2000; Windows 98; Windows 98 Second Edition; Windows ME; Windows NT; Windows Server 2003 Service Pack 1 for Itanium-based Systems; Windows Server 2003 x64 editions; Windows Vista Business; Windows Vista Enterprise; Windows Vista Home Basic; Windows Vista Home Premium; Windows Vista Starter; Windows Vista Ultimate; Windows XP; Windows XP Professional x64 Edition; Microsoft Windows NT 4.0 requires Service Pack 6a

Required Software:

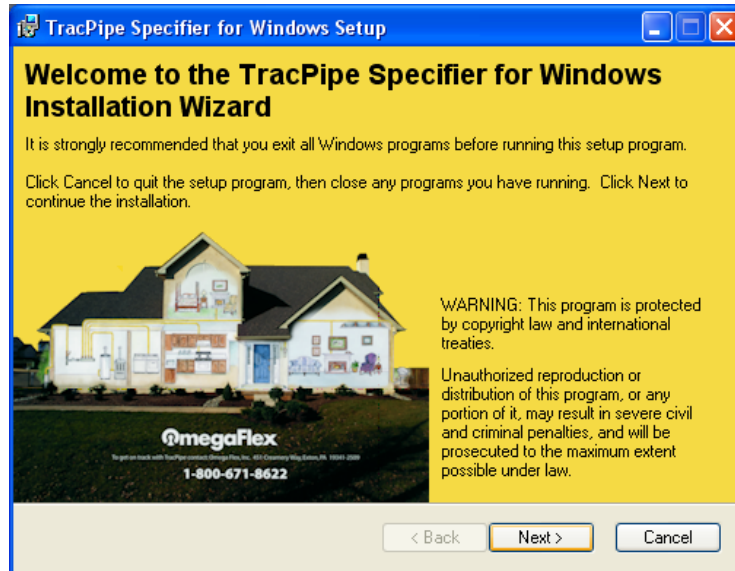
You must also be running Microsoft Internet Explorer 5.01 or later

Hardware:

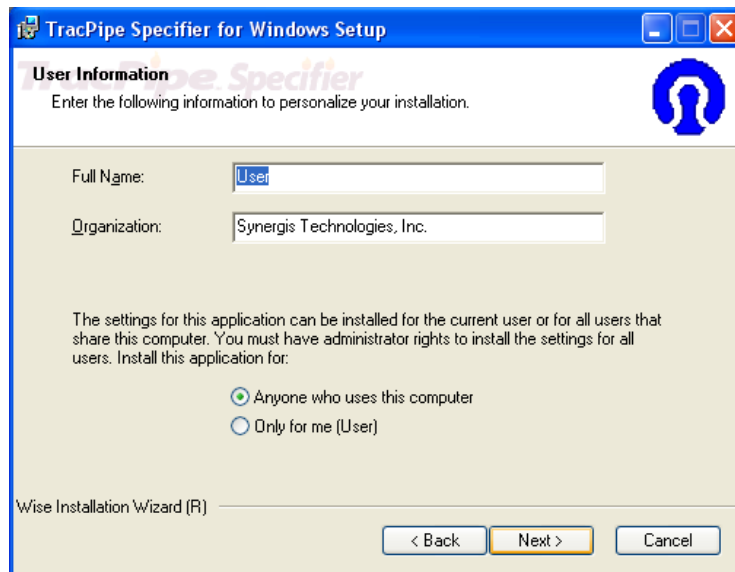
Same as operating system plus the following:
4.0 MB of hard disk space (minimum)

Installation Instructions:

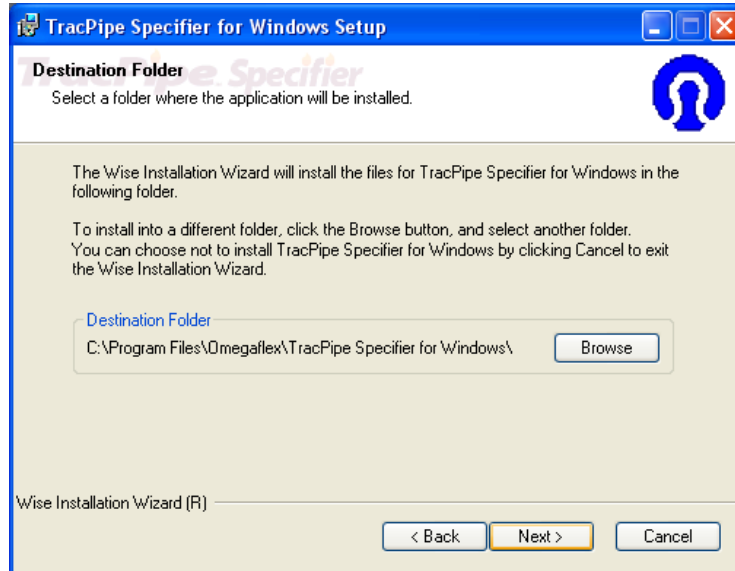
- 1) From the Start menu, choose Run, and enter the path name and TracPipeSpecifier.exe. For example, enter C:\ TracPipeSpecifier.exe.
- 2) When the welcome screen is displayed, choose next.



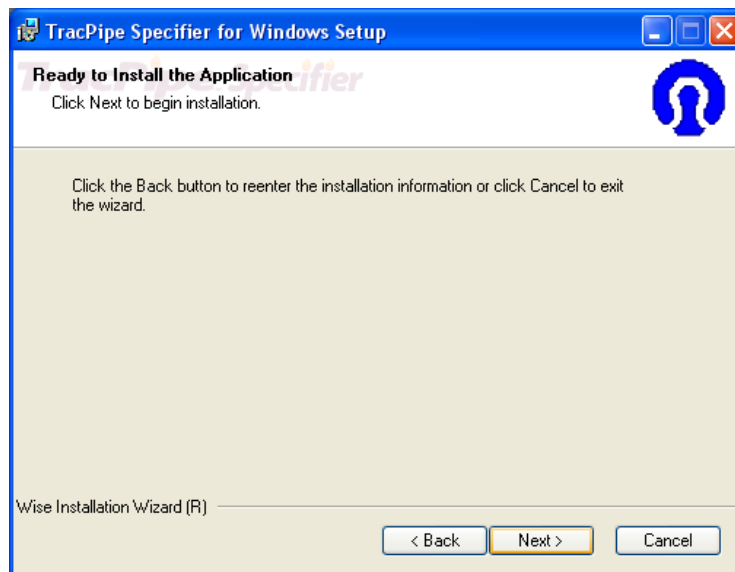
- 3) When the user information dialog appears, enter the user name for the computer and the organization name. Choose whether this application is accessible for all users on this computer or only the user who is installing the application. Choose Next to continue.



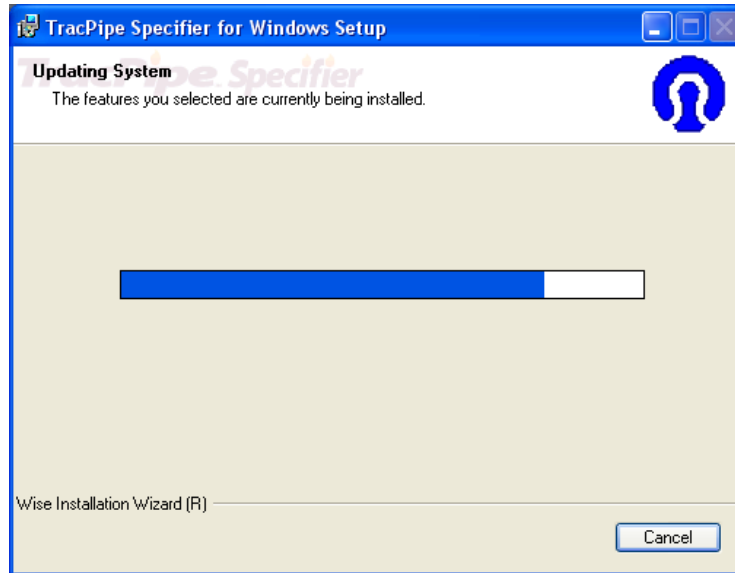
- 4) The destination drive and folder where the program will be installed is listed. You can accept the default or choose Browse to specify a different location. If you specify a folder that does not exist the setup program prompts you before creating it.



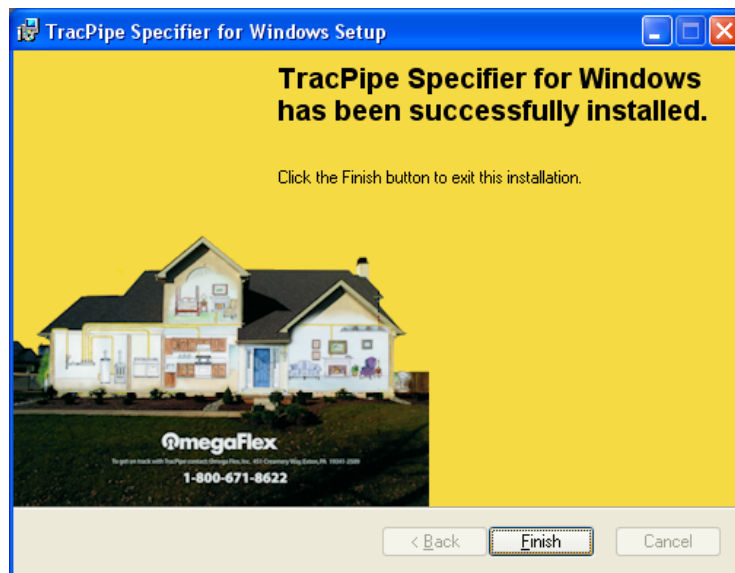
- 5) Everything is ready to install the software, click the next button.



6) During the installation, the following progress screen is displayed.



7) When the installation is complete select Finish.

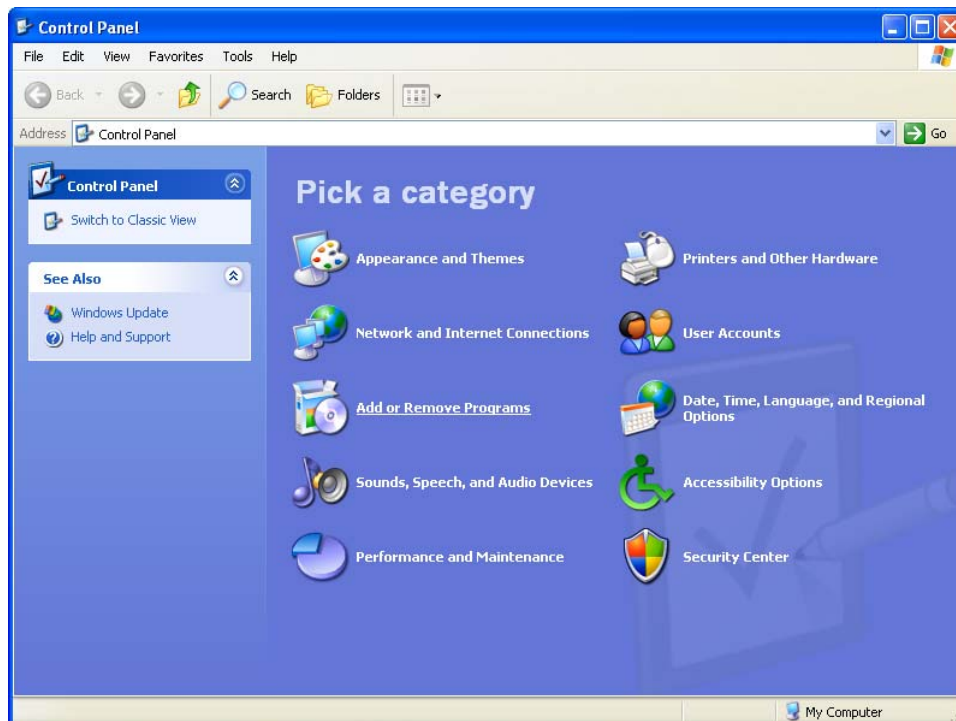


Uninstalling Instructions:

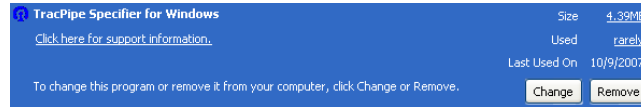
1) From the Start menu, choose Settings, and then choose Control Panel.



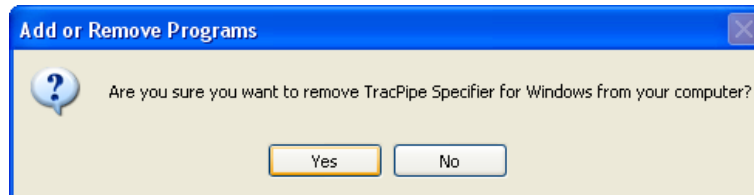
2) In the Control Panel, choose Add/Remove Programs.



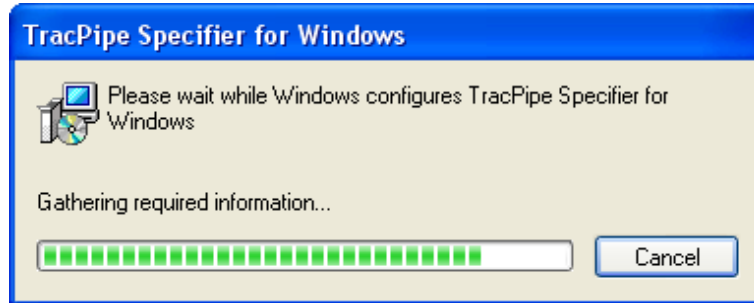
- 3) On the Install/Uninstall tab in the Add/Remove Program Properties dialog box, choose TracPipe Specifier for Windows, and click Remove.



- 4) Confirm you want to uninstall the application by clicking yes.

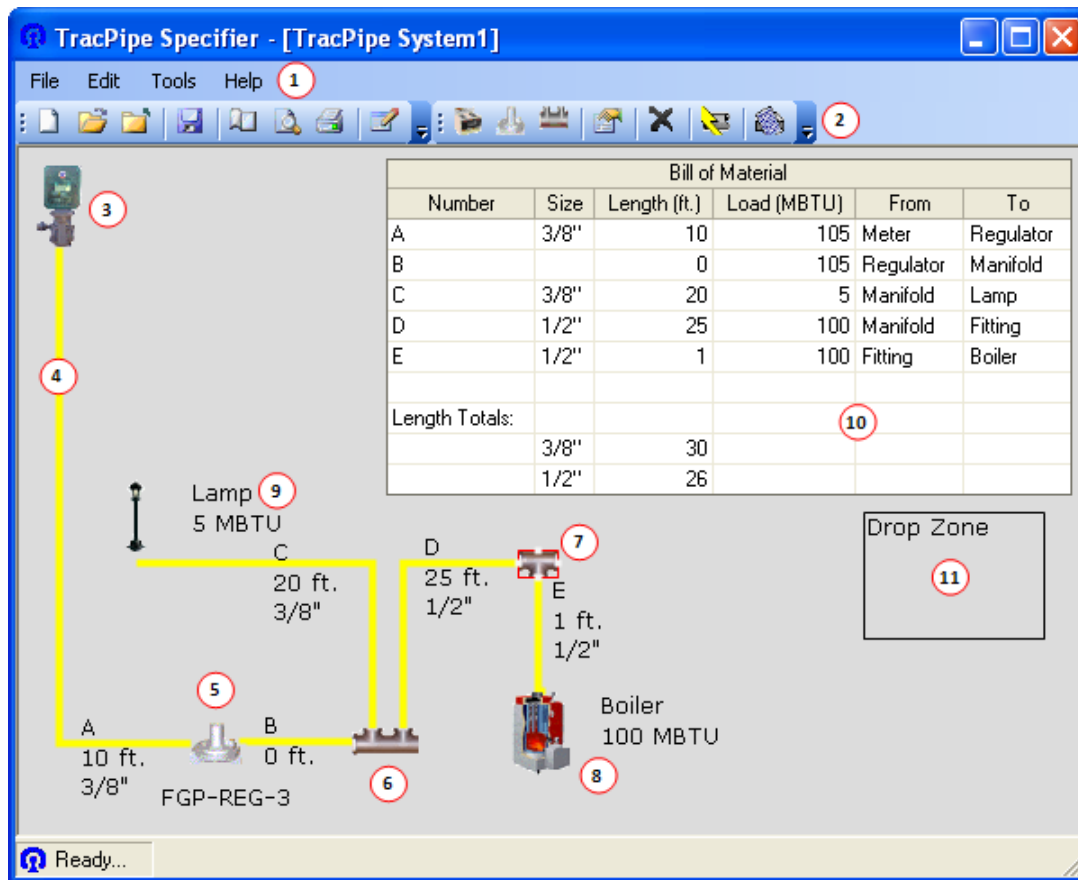


- 5) During the uninstall process, the following progress screen is displayed.



The Specifier Environment

Main Window



1. Main Menu
2. Toolbars
3. Meter
4. TracPipe Segment
5. Regulator
6. Manifold
7. Fitting (Note: Selected objects, like this fitting, are displayed with a red rectangle surrounding them)
8. Appliance
9. Label
10. Bill of Material
11. Drop Zone

Main Menu

The text items at the top of the TracPipe Specifier window are the main menu. Each main menu item displays a set of related commands.

- File
- Edit
- Tools
- Help

Click a menu item to display the related commands.

Toolbars

There are two toolbars:

- Standard Toolbar
- TracPipe Toolbar

The Standard Toolbar

Directly below the main menu, the Standard Toolbar allows you to perform the most common actions in TracPipe Specifier.



The TracPipe Toolbar

The TracPipe Toolbar is located directly to the right of the Standard Toolbar.




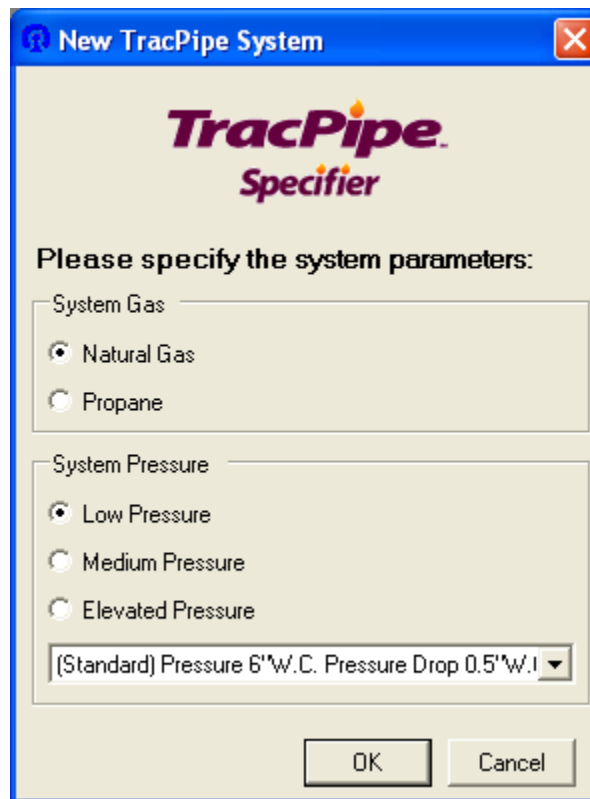
Using TracPipe Specifier for Windows

Working with a TracPipe System

Creating a new system

To create a new TracPipe System from within Specifier for Windows

1. Display the New TracPipe system dialog box.
 - Choose **File** > **New....**
 - Click the New button. 
2. In the New TracPipe system dialog box, choose the system gas and system pressure.




3. Click **OK** to create the system.

Note The drop down list provides options for pressures and pressure drops for the corresponding selected pressure level.

Opening a system


To open a TracPipe System from within Specifier for Windows

1. Display the Open dialog box.
 - Choose **File** ➤ **Open....**
 - Click the Open button. 
 - Or, press **Ctrl+O**.
2. In the Open File dialog box, navigate to where the TracPipe system file is stored.
3. Select the TracPipe system file and click **Open**.

Note You can open recently used TracPipe system files quickly from the list at the bottom of the File menu.

Saving a system


To save a TracPipe System from within Specifier for Windows

1. Display the Save dialog box.
 - Choose **File** ➤ **Save....**
 - Click the Save button. 
 - Or, press **Ctrl+S**.
2. In the Save File dialog box, navigate to where the TracPipe system file is to be stored.
3. Name the TracPipe system file and click **Save**.

Note You can save a copy of the active TracPipe system file by choosing **File** ➤ **Save As....**


Closing a system

To close a TracPipe System from within Specifier for Windows

1. To close the current TracPipe system.
 - Choose **File** ➤ **Close....**
 - Or, click the Close button. 

Printing a system


To print a TracPipe system

1. Open a TracPipe system to print.
2. Open the Print dialog box.
 - Choose **File** ➤ **Print....**
 - Click the Print button. 
 - Or, press **Ctrl+P**.
3. Click **OK**.

Note To can change the paper size, system printer, orientation and margins prior to printing

- Choose **File** ➤ **Page Setup....**
- Click the Page Setup button. 

Note To preview the system before printing

- Choose **File** ➤ **Print Preview....**
- Click the Print Preview button. 


Note To print the system in grayscale

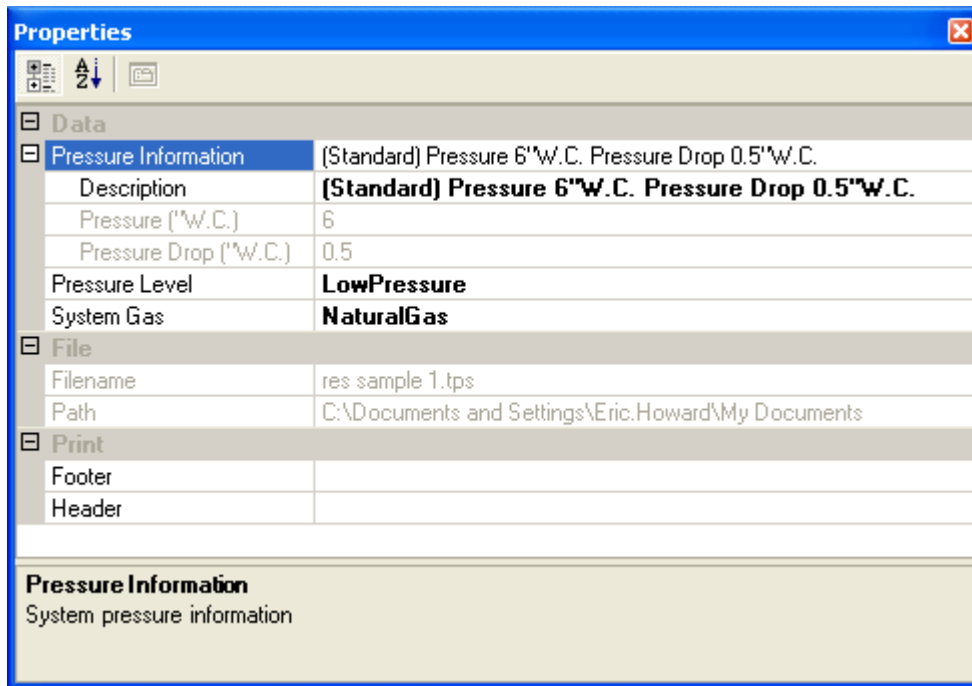
- Choose **Edit** ➤ **Options....**
- Uncheck the Print in color checkbox.

Modifying a TracPipe System

System Properties

To modify a TracPipe System from within Specifier for Windows

1. Display the System Properties dialog box.
 - Choose **File** ➤ **System Properties....**
 - Click the Open button. 
2. In the System Properties dialog box, change the values that are not displayed in light gray.



3. In the upper, right corner of the System Properties window, click the Close button. 

Note The header and footer properties can be used to display information such as project name, company information, system pressure and pressure drop, etc.


Adding an Appliance

To add an appliance to a TracPipe System from within Specifier for Windows

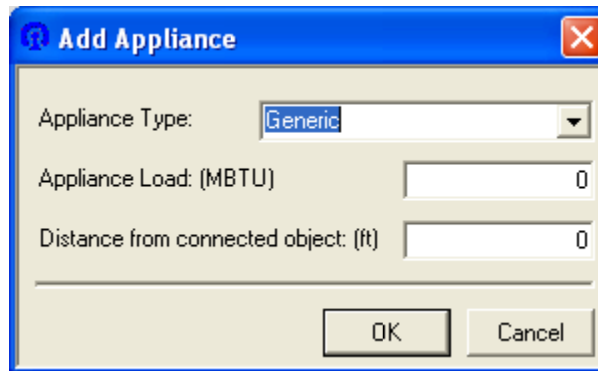
1. Select a Meter, Regulator, Manifold, or Fitting
2. Make sure the Drop Zone is positioned where you would like the new appliance created.

Note Make sure the Drop Zone does not contain any other objects.

3. Display the Add Appliance dialog box using any of the following methods.

- Choose **Tools** ► **Add Appliance....**
- Click the Add Appliance button. 
- Right mouse click and choose **Add Appliance....**

4. In the Add Appliance dialog box, choose the appliance type.



5. Enter the appliance load in MBTU.
6. Enter the distance the appliance is from the connected object in feet.
7. Click **OK** to add the appliance.


Note The graphics displayed for the appliance will change depending on the appliance type selected.

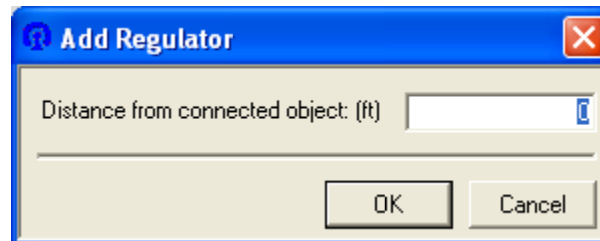
Adding a Regulator

To add a regulator to a TracPipe System from within Specifier for Windows

1. Select a Meter, Regulator, Manifold, or Fitting
2. Make sure the Drop Zone is positioned where you would like the new regulator created.

Note Make sure the Drop Zone does not contain any other objects.

3. Display the Add Regulator dialog box using any of the following methods.
 - Choose **Tools** ► **Add Regulator....**
 - Click the Add Regulator button. 
 - Right mouse click and choose **Add Regulator....**
4. In the Add Regulator dialog box, enter the distance the regulator is from the connected object in feet.




5. Click **OK** to add the regulator.

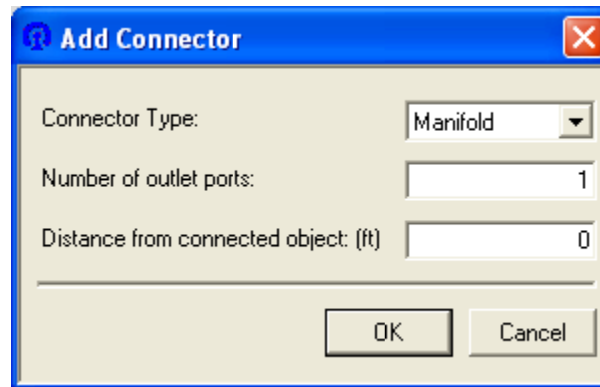
Adding a Manifold

To add a manifold to a TracPipe System from within Specifier for Windows

1. Select a Meter, Regulator, Manifold, or Fitting
2. Make sure the Drop Zone is positioned where you would like the new manifold created.

Note Make sure the Drop Zone does not contain any other objects.

3. Display the Add Connector dialog box using any of the following methods.
 - Choose **Tools** ► **Add Connector...**
 - Click the Add Connector button. 
 - Right mouse click and choose **Add Connector...**
4. In the Add Connector dialog box, select the connector type of Manifold.



5. Enter the number of ports in the manifold.
6. Enter the distance the manifold is from the connected object in feet.
7. Click **OK** to add the manifold.


Note The graphics displayed for the manifold will change depending on the number of ports in the manifold.

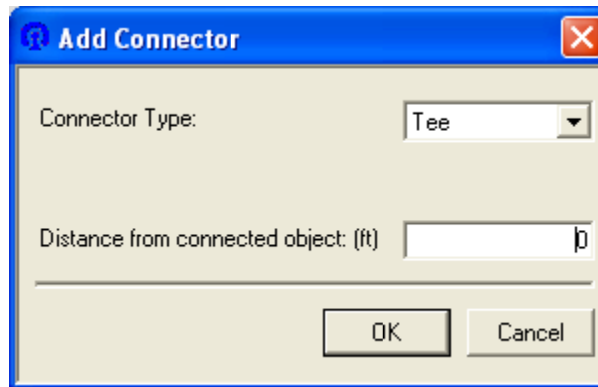
Adding a Connector

To add a connector to a TracPipe System from within Specifier for Windows

1. Select a Meter, Regulator, Manifold, or Fitting
2. Make sure the Drop Zone is positioned where you would like the new connector created.

Note Make sure the Drop Zone does not contain any other objects.

3. Display the Add Connector dialog box using any of the following methods.
 - Choose **Tools** ► **Add Connector...**
 - Click the Add Connector button. 
 - Right mouse click and choose **Add Connector...**
4. In the Add Connector dialog box, select the type of connector you would like to create.



5. Enter the distance the connector is from the connected object in feet.
6. Click **OK** to add the pipe segment.

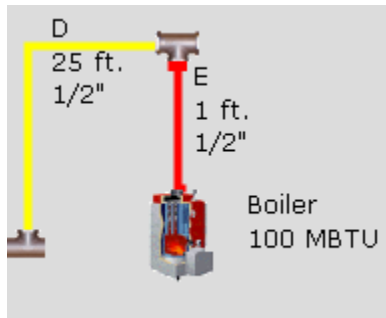
Working with TracPipe System Components

Modifying a Pipe Segment

To modify the connection point of a TracPipe segment

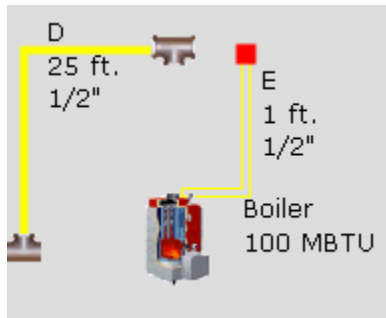
1. Select a TracPipe segment.
2. Select the connector to be repositioned.

Note The connector is the large red square at the end of the TracPipe Segment.



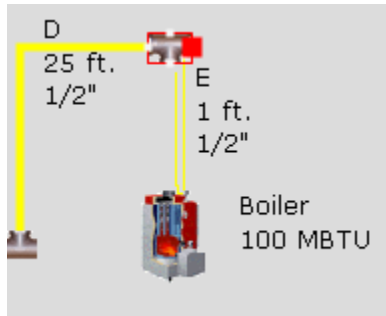
3. Left mouse click and drag the connector away from the object it is connected to.

Note When a TracPipe segment is disconnected from an object it is displayed as an outline.



4. Drag the connector to the location you would like it to connect to and release the left mouse button.

Note Once you move the mouse over the object you are connecting to the connections point appear as white 'X's. You must connect the pipe segment to the object at one of the white 'X' locations.



Moving a component


To move a component on a TracPipe System drawing

1. Select a Meter, Regulator, Manifold, Fitting, Appliance or Label
2. With the cursor over the component, hold the left mouse button down and drag the component to the new location.
3. Once at the new location, release the left mouse button.

Note The location of a component may also be changed by modifying the component's properties dialog. Label locations are modified through the corresponding component's properties dialog

Modifying a component

To modify a TracPipe System from within Specifier for Windows

1. Select a Meter, Regulator, Manifold, Fitting, TracPipe segment or Appliance
2. Display the Properties dialog box.
 - Choose **Tools** > **Properties....**
 - Click the Properties button. 
 - Right mouse click and choose **Properties....**
3. In the Properties dialog box, change the values that are not displayed in light gray.

Meter Properties

Data	
Meter Type	Meter
Pressure Information	2psi Pressure (56"W.C.) 1psi Pressure Drop (28"
Pressure Level	ElevatedPressure
System Gas	NaturalGas

Layout	
X	10
Y	10

Meter Type
Type of Meter

The location of the meter is the only property that can be changed. To change the other properties, use System Properties.

TracPipe Segment Properties

Data	
Length (Feet)	10
Size	3/8"

Display	
Display style	RightAngle
Start with vertical line	True

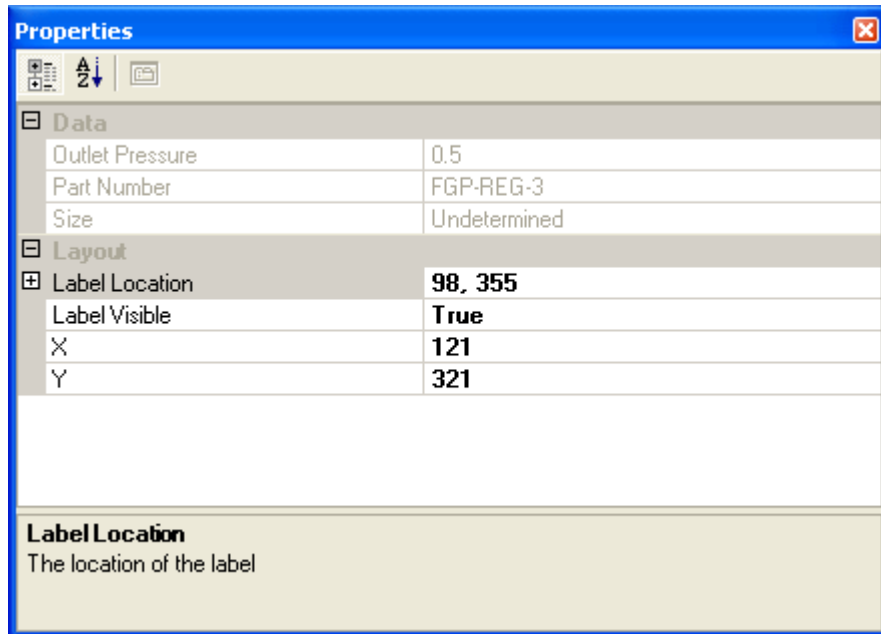
Layout	
From Point	22, 55
Label Location	32, 315
Label Visible	True
To Point	121, 332

Display style
Controls the style of line representing the pipe

For a TracPipe segment, the following items may be modified:

- The length in feet.
- The display style of the TracPipe segment; either Straight or Right Angle.
- Whether or not the TracPipe segment starts with a vertical line or horizontal line.
- The start and end points of the TracPipe segment.
- The label location.
- Label visibility.

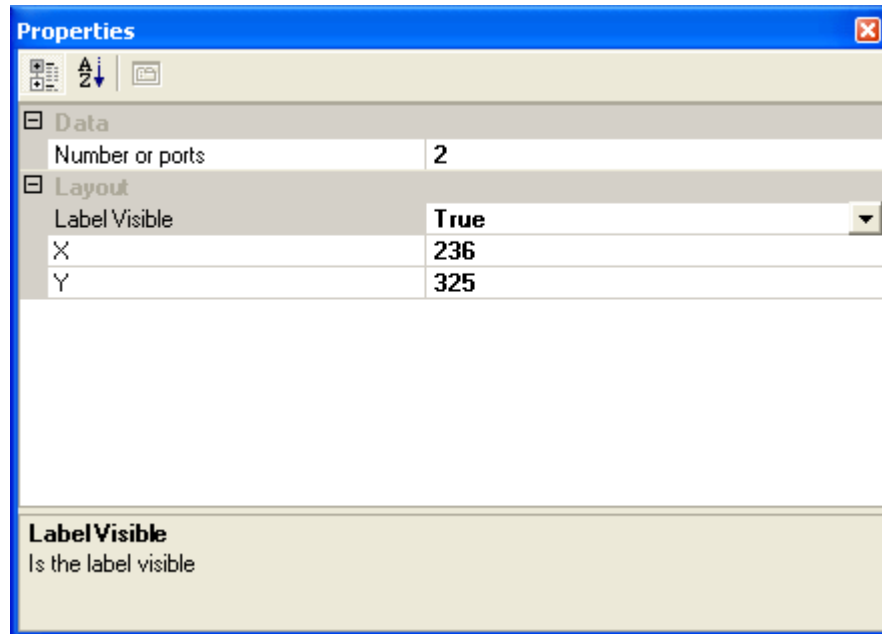
Regulator Properties



For a Regulator, the following items may be modified:

- The Regulator location.
- The label location.
- Label visibility.

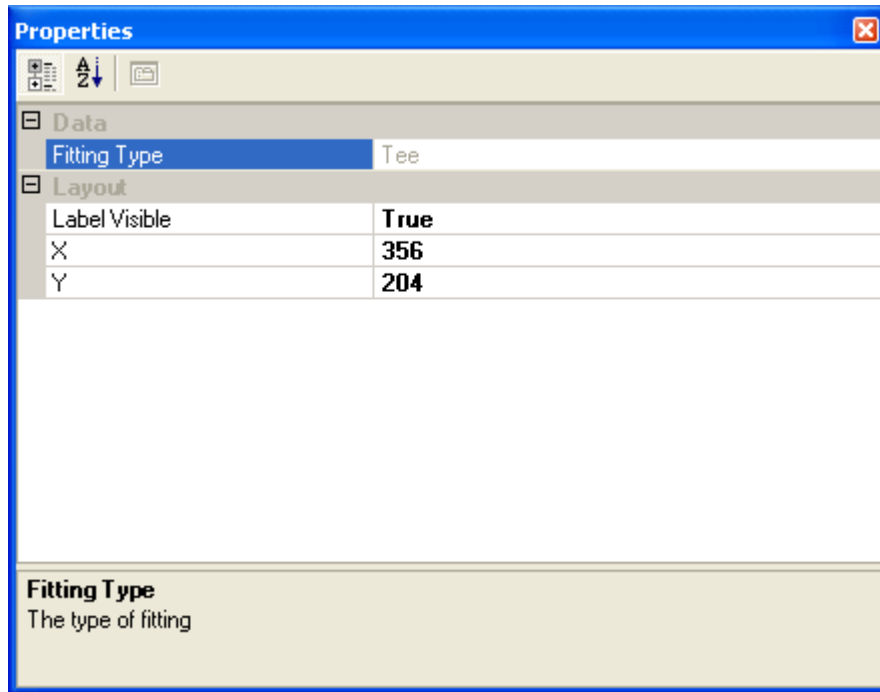
Manifold Properties



For a Manifold, the following items may be modified:

- The number of ports in the manifold.
- The Manifold location.
- Label visibility.

Fitting Properties



For a Fitting, the following items may be modified:

- The Fitting location.
- Label visibility.

Appliance Properties

Data	
Appliance Name	
Appliance Type	Boiler
Capacity (MBTU)	100

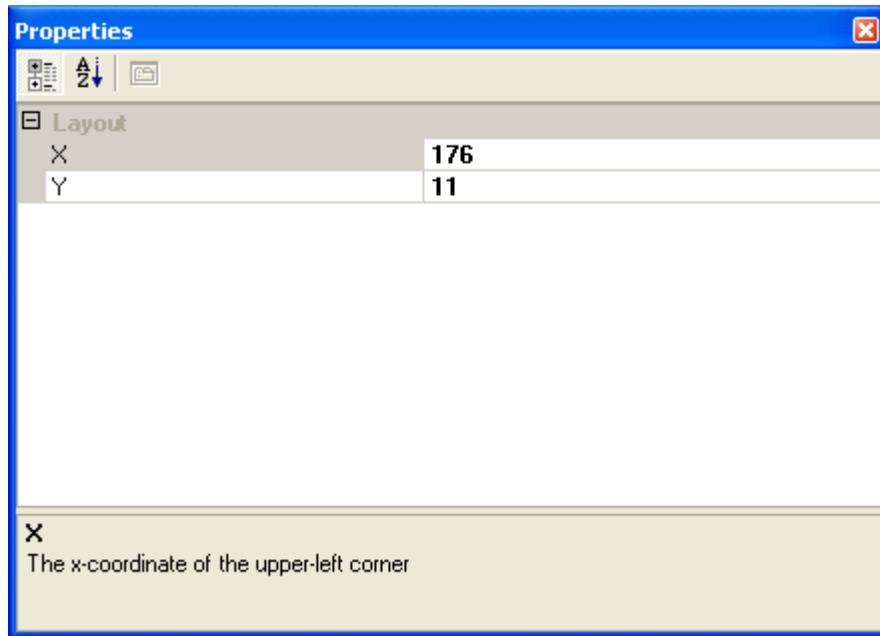
Layout	
Label Location	397, 301
Label Visible	True
X	349
Y	301

Appliance Name
The name of appliance

For a Appliance, the following items may be modified:

- The Appliance name. If a value is entered here this name is displayed in the drawing and the bill of material, instead of the appliance type.
- The Appliance type.
- The Appliance capacity in MBTU
- The Appliance location.
- The label location.
- Label visibility.

Bill of Material Properties




The location of the Bill of Material is the only property that can be changed.

4. In the upper, right corner of the Properties window, click the Close button. 

Deleting a component

To delete a component from a TracPipe System within Specifier for Windows


1. Select a Regulator, Manifold, Fitting, Pipe Segment, Appliance, or Bill of Material
2. To remove the component
 - Choose **Tools** > **Delete**.
 - Click the Delete button. 
 - Right mouse click and choose **Delete**.
 - Press the **Delete** key on the keyboard.

Note Any components connected to the item to be deleted may also be deleted.

Calculating the System

To calculate the TracPipe segment sizes of a TracPipe System from within Specifier for Windows

1. To calculate the TracPipe segment sizes

- Choose **Tools** ► **Calculate Size**.
- Click the Calculate Size button. 


Note The system does not automatically recalculate after modifications are made.

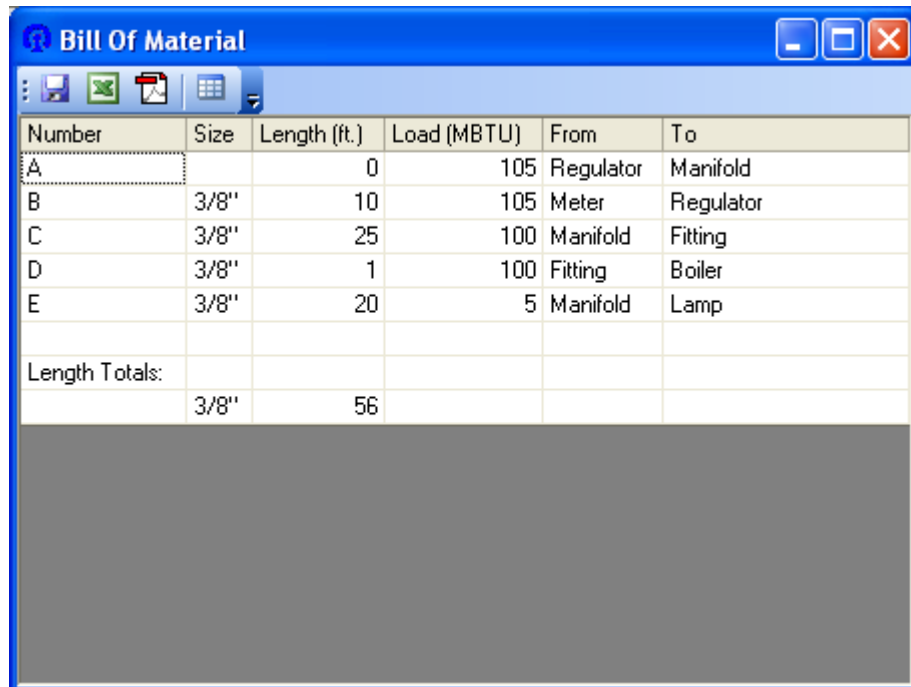
Note TracPipe segments that have a length of zero (0) are ignored.

Working with the System Bill of Material


Displaying Bill of Material

To display the bill of material for a TracPipe System from within Specifier for Windows

1. To display the Bill of Material dialog box.
 - Choose **Tools** ► **Bill of Material...**
 - Click the Bill of Material button. 
2. The Bill of Material Dialog is displayed.





Number	Size	Length (ft.)	Load (MBTU)	From	To
A		0	105	Regulator	Manifold
B	3/8"	10	105	Meter	Regulator
C	3/8"	25	100	Manifold	Fitting
D	3/8"	1	100	Fitting	Boiler
E	3/8"	20	5	Manifold	Lamp
Length Totals:					
	3/8"	56			

3. In the upper, right corner of the Bill of Material window, click the Close button. 

Export as text

To export the bill of material for a TracPipe System to a comma delimited text file.



1. Display the Bill of Material dialog box.
 - Choose **Tools** ► **Bill of Material...**
 - Click the Bill of Material button. 
2. Export the Bill of Material as a text file.
 - Click the Export as Text button on the toolbar. 



3. In the Save File dialog box, navigate to where the text file is to be stored.
4. Name the text file and click **Save**.

Export as spreadsheet

To export the bill of material for a TracPipe System to a spreadsheet file.




1. Display the Bill of Material dialog box.
 - Choose **Tools** ► **Bill of Material...**
 - Click the Bill of Material button. 
2. Export the Bill of Material as a spreadsheet file.
 - Click the Export as Spreadsheet button on the toolbar. 



3. In the Save File dialog box, navigate to where the spreadsheet file is to be stored.
4. Name the spreadsheet file and click **Save**.





Export as PDF

To export the bill of material for a TracPipe System to a PDF file.

1. Display the Bill of Material dialog box.
 - Choose **Tools** ► **Bill of Material...**
 - Click the Bill of Material button. 
 2. Export the Bill of Material as a PDF file.
 - Click the Export as PDF button on the toolbar. 
- 
3. In the Save File dialog box, navigate to where the PDF file is to be stored.
 4. Name the PDF file and click **Save**.

Place on system drawing

To place the bill of material for a TracPipe System on the system drawing

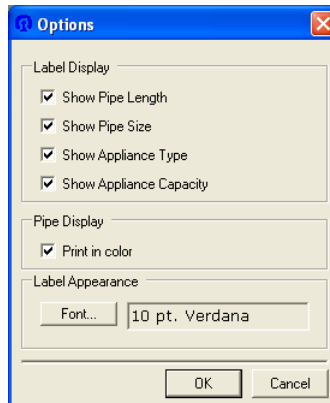
1. Display the Bill of Material dialog box.
 - Choose **Tools** ► **Bill of Material...**
 - Click the Bill of Material button. 
 2. Place the Bill of Material on the system drawing.
 - Click the Place on drawing button on the toolbar. 
- 
3. In the upper, right corner of the Bill of Material window, click the Close button. 
 4. Move the Bill of Material to the desired location.

Note You can move the Bill of Material below the drawing and visible screen. The scroll bar on the right hand side of the screen can be utilized to view the Bill of Material. Use the Print Preview command to view the Bill of Material placement prior to printing.

Specifier Options

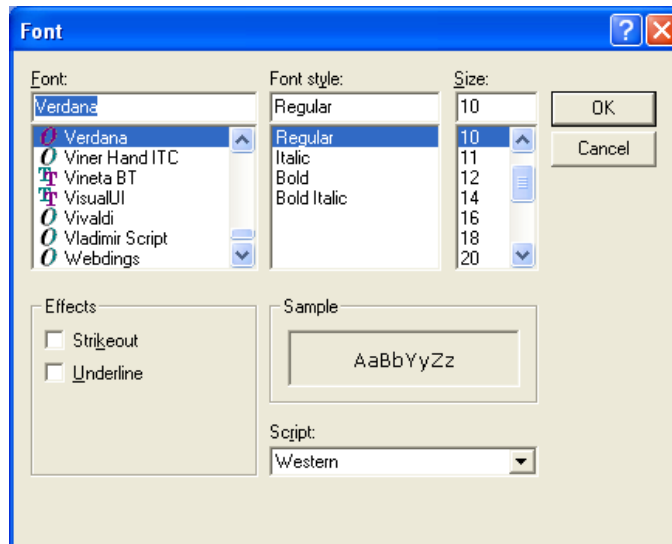
To change options for the TracPipe Specifier for Windows

1. Display the Options dialog box.
 - Choose **Edit** ➤ **Options....**
2. The Options Dialog is displayed.



3. Choose which labels are to be displayed. A check mark indicates the label is displayed.
4. Choose whether or not you want to print in color.
5. Click **Font...** to change the font for all labels.

This displays the font dialog.



- Make necessary changes to font
 - Click **OK** to save the changes to the font options.
6. Click **OK** to save the changes to the options.